

Attachment B

Selected Drawings

01-ARTIST CONCEPT

Tobias Rehberger: Here is Here. And Everywhere.

Concept

My public art project for Green Square comprises 4 different interventions, strategically positioned throughout Green Square. Each intervention consists of a sculptural object and an illuminated yellow globe.

The sculptural elements refer to different places around the world as well as to their actual sites in Green Square. They function as seating objects and also carry one or more planters that are planted with different flower and plant arrangements. Each intervention is equipped with a big yellow spherical light object attached to a long pole. These light objects are controlled in a way that the moment the sun rises in the chosen places, the respective lights will turn on and off again when the sun sets

The places the sculptures are related to are chosen according to the different countries of origin where the current citizens of Green Square or their ancestors stem from. For each country a place is chosen that represents it in a special way:

Australia	→	Heard Island	Zetland open space
England	→	Grasmere, Lake District	Library Plaza
China	→	Irkeshtam Port, Xinjiang	Woolwash Park

While the above three countries were chosen according to the ranks of the actual statistics, the fourth country is representative for the many other minorities who also live in Green Square:

Panama	→	Yaviza, Tapón del Darién	Joynton and Zetland Avenues
--------	---	--------------------------	-----------------------------

The reason why I chose Panama is very simple: Everybody knows the Panama Canal and also Panama as a connection point and a hub for logistics. So everybody has an imagination of what Panama might be or look like even if one has never been there.

The simultaneousness of having the view of the sun in Lake District whilst sitting on a sculptural object in Green Square Sydney accents a commonality in the different which is so typical for our contemporary world, in the most positive way. Also playing with romantic notions and aspiration for far away and exotic places, it triggers ones imagination of the far while at the same time creating awareness of the actual site.

It is a real everyday experience playing ones phantasies and showing geographical facts in real time without leaving the neighbourhood while offering a public place for people to get together and meet outside for free without the obligation to consume anything

The project talks about and creates a site specificity in an also humorous way that people can easily relate to. It deals with history and community by connecting us with different places in the world by showing us different views of this one big object that is so essential to our lives and brings us together under it's light: the sun.

03-DEVELOPMENT
APPLICATION DRAWINGS



SITE 3 IS SUBJECT TO A SEPARATE FUTURE DEVELOPMENT APPLICATION

1

Green Square Library Plaza
Grasmere Lake District - England

2

School at Corner Joynton Ave and Zealand Ave
Yavza, Tapon del Daren, Panama

4

Zealand Open Space
Heard and McDonald Island

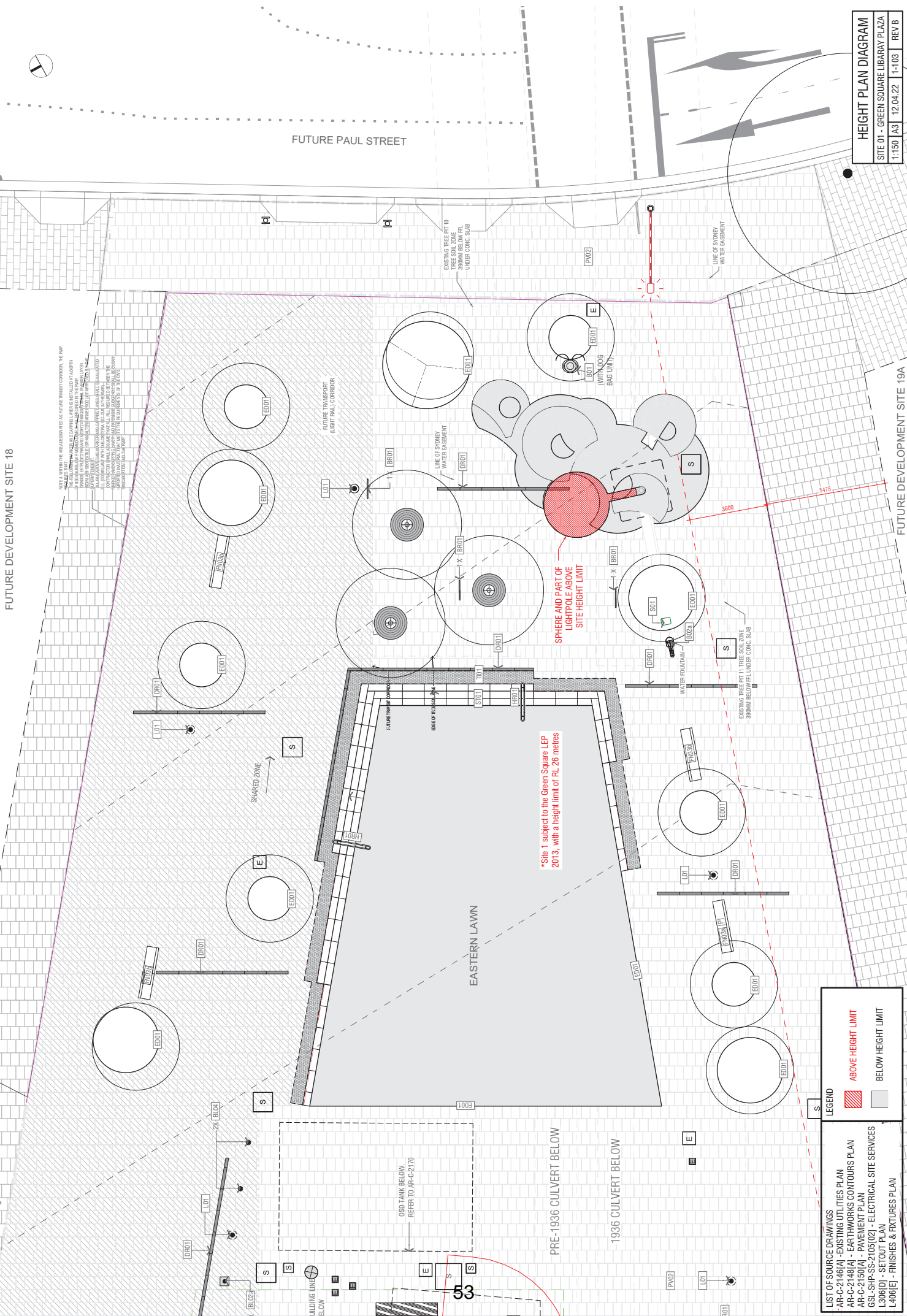
Green Square Town Centre and Epsom Park Precinct 1:1000 @ A0 Long (641 x 2000mm)

OVERALL SITE PLAN		
PROJECT WIDE - SITE PLAN		
1:3000 A3	23.03.22	0-001A REV G

FUTURE PAUL STREET

HEIGHT PLAN DIAGRAM
 SITE 01 - GREEN SQUARE LIBRARY PLAZA
 1:50 A3 | 12.04.22 | 1-103 | REV B

NOTE: WITHIN THE AREAS MARKED AS FUTURE TRANSPORT CORRIDOR, THE RMP TRACKS, OVERHEAD POWER LINES AND CABLES ARE INSTALLED AT A DEPTH OF 300MM BELOW FFL UNDER CONCRETE SLAB. THE RMP TRACKS ARE INSTALLED AT A DEPTH OF 300MM BELOW FFL UNDER CONCRETE SLAB. THE OVERHEAD POWER LINES AND CABLES ARE INSTALLED AT A DEPTH OF 300MM BELOW FFL UNDER CONCRETE SLAB. THE RMP TRACKS ARE INSTALLED AT A DEPTH OF 300MM BELOW FFL UNDER CONCRETE SLAB. THE OVERHEAD POWER LINES AND CABLES ARE INSTALLED AT A DEPTH OF 300MM BELOW FFL UNDER CONCRETE SLAB.



*Site 1 subject to the Green Square LEP 2013, with a height limit of RL 26 metres

SPHERE AND PART OF LIGHTPOLE ABOVE SITE HEIGHT LIMIT

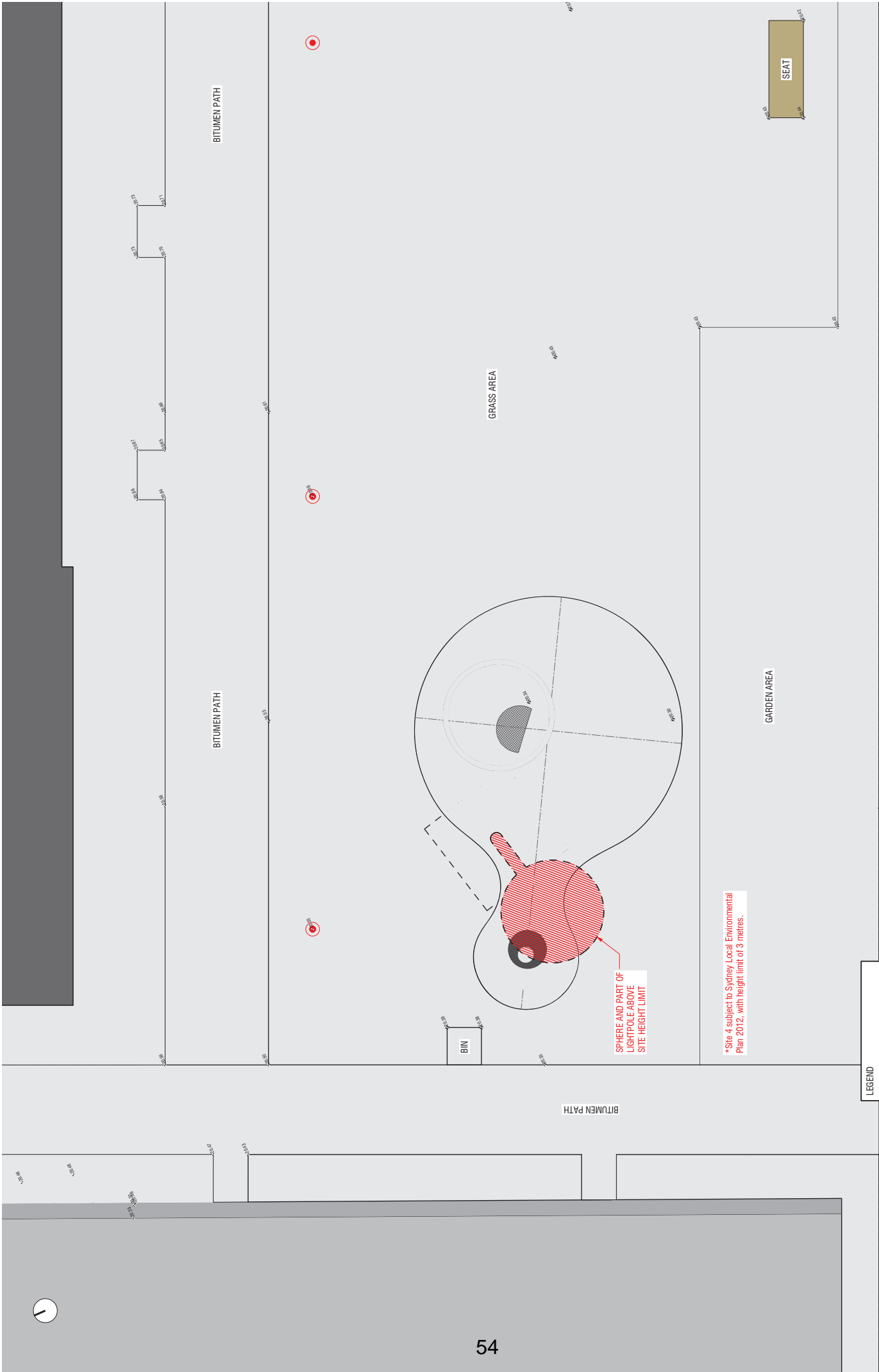
LIST OF SOURCE DRAWINGS

- AR-C-2148(A) - EXISTING UTILITIES PLAN
- AR-C-2148(A) - EARTHWORKS CONTOURS PLAN
- AR-C-2150(A) - PAVEMENT PLAN
- GSI_SHP_SS-2105(02) - ELECTRICAL SITE SERVICES
- L306(D) - SETOUT PLAN
- L408(E) - FINISHES & FIXTURES PLAN

LEGEND

- ABOVE HEIGHT LIMIT
- BELOW HEIGHT LIMIT

FUTURE DEVELOPMENT SITE 19A



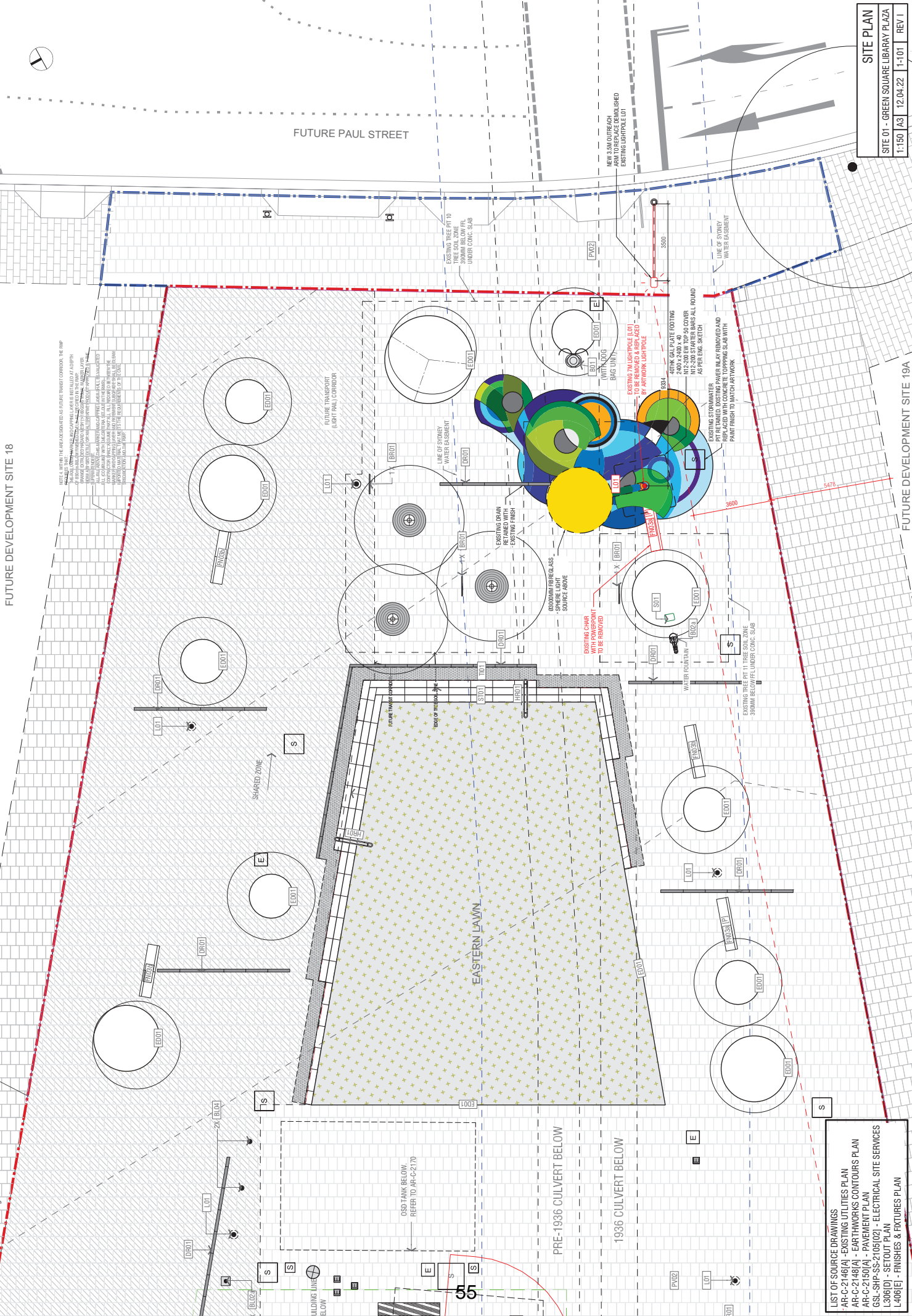
HEIGHT LIMIT DIAGRAM		
SITE 04 - ZETLAND OPEN SPACE		
1:100	A3	28.09.21 4-103 REV A

EXISTING AUSGRID SITE

LEGEND

	ABOVE HEIGHT LIMIT
	BELOW HEIGHT LIMIT

LIST OF SOURCE DRAWINGS
 60300384-SHT-02-4A-G-0122.dwg
 BL09062647_124742_VS04 Public Domain WAE(5).pdf
 zetland_open space plan from geocortex marked up.pdf



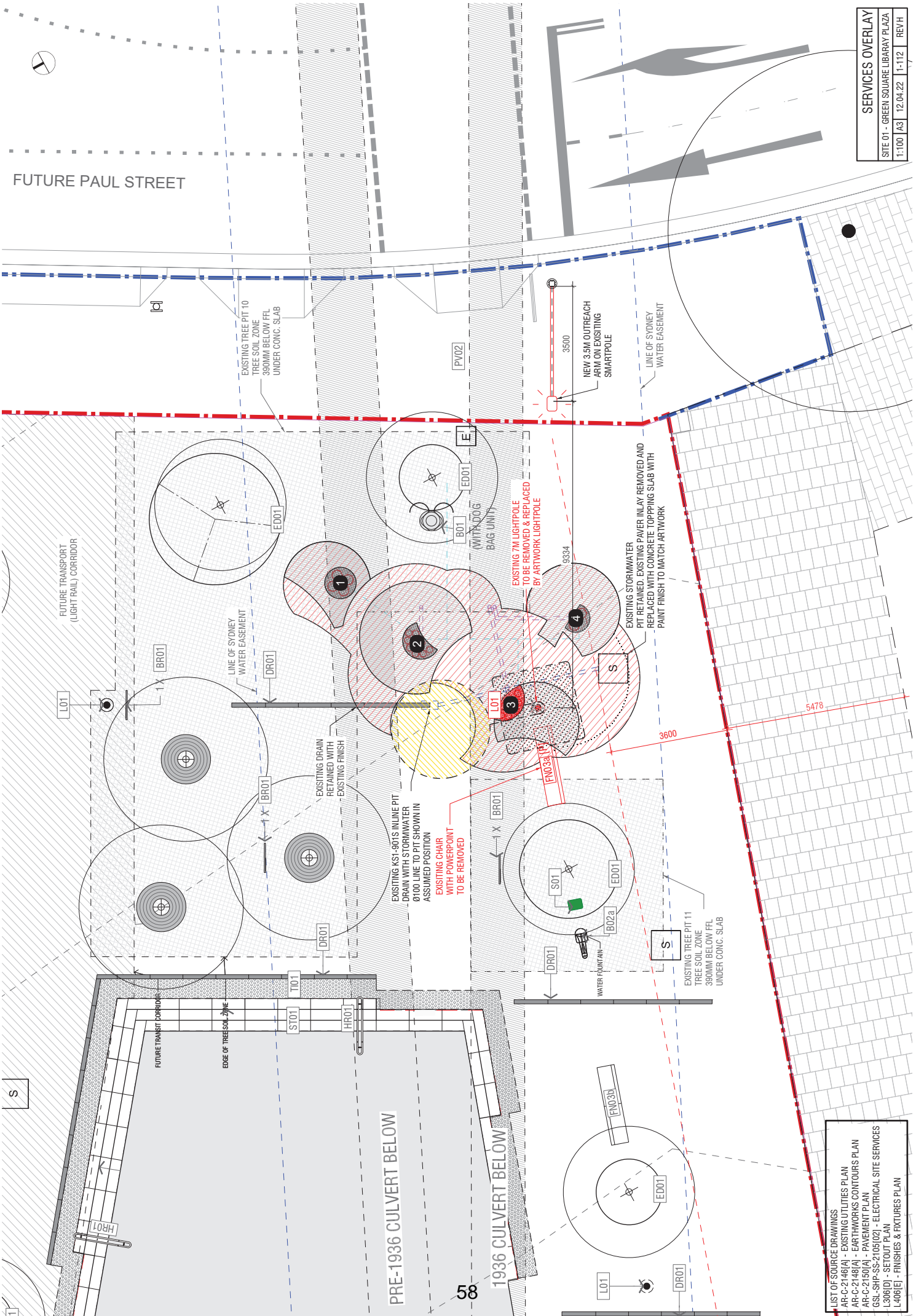
NOTE: WITHIN THE AREAS MARKED AS FUTURE TRANSPORT CORRIDOR, THE RMP PLANS TO PROVIDE A 10M WIDE TRANSPORT CORRIDOR WITH A 5M WIDE BUFFER ZONE ON EITHER SIDE. THE TRANSPORT CORRIDOR WILL BE GRADED TO A 10% SLOPE AND THE BUFFER ZONE WILL BE GRADED TO A 5% SLOPE. THE TRANSPORT CORRIDOR WILL BE GRADED TO A 10% SLOPE AND THE BUFFER ZONE WILL BE GRADED TO A 5% SLOPE. THE TRANSPORT CORRIDOR WILL BE GRADED TO A 10% SLOPE AND THE BUFFER ZONE WILL BE GRADED TO A 5% SLOPE.

- LIST OF SOURCE DRAWINGS
- AR-C-2148(A) - EXISTING UTILITIES PLAN
 - AR-C-2148(A) - EARTHWORKS CONTOURS PLAN
 - AR-C-2150(A) - PAVEMENT PLAN
 - GSL-SHP-SS-2105(02) - ELECTRICAL SITE SERVICES
 - L306(D) - SETOUT PLAN
 - L400(E) - FINISHES & FIXTURES PLAN

SITE PLAN
 SITE 01 - GREEN SQUARE LIBRARY PLAZA
 1:50 A3 | 12.04.22 | 1-101 | REV 1

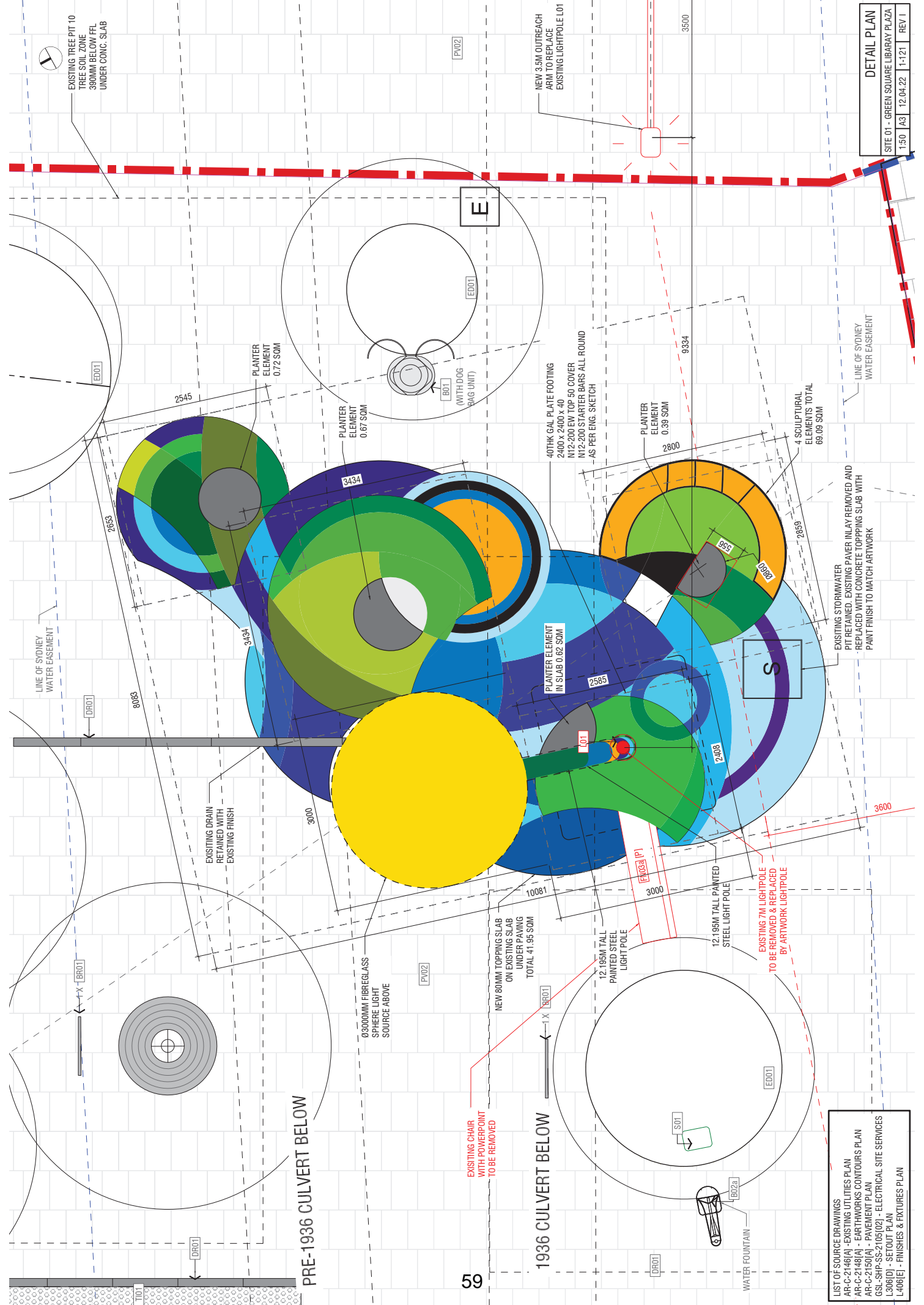
FUTURE DEVELOPMENT SITE 19A

FUTURE PAUL STREET



- LIST OF SOURCE DRAWINGS**
- AR-C-2146(A) - EXISTING UTILITIES PLAN
 - AR-C-2148(A) - EXISTING UTILITIES CONTOURS PLAN
 - AR-C-2150(A) - PAVEMENT PLAN
 - GSI-SHP-SS-2105(02) - ELECTRICAL SITE SERVICES
 - L306(D) - SETOUT PLAN
 - L400(E) - FINISHES & FIXTURES PLAN

PRE-1936 CULVERT BELOW
 1936 CULVERT BELOW

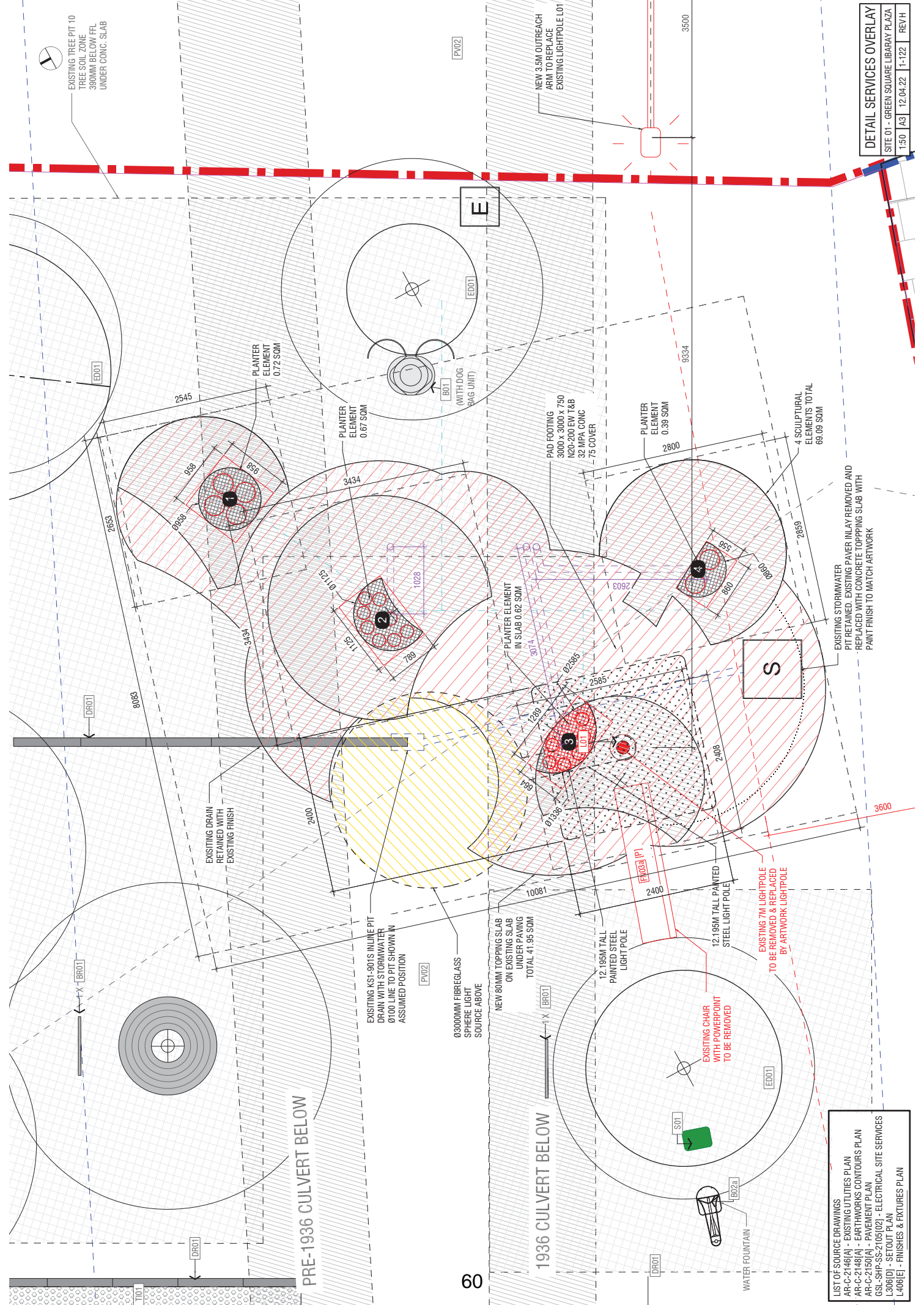


DETAIL PLAN
 SITE 01 - GREEN SQUARE LIBRARY PLAZA
 1:50 A3 | 12.04.22 | 1-121 | REV J

- LIST OF SOURCE DRAWINGS**
- AR-C-2146(A) - EXISTING UTILITIES PLAN
 - AR-C-2148(A) - EARTHWORKS CONTOURS PLAN
 - AR-C-2150(A) - PAVEMENT PLAN
 - GSL-SHP-SS-2105(02) - ELECTRICAL SITE SERVICES
 - L306(D) - SETOUT PLAN
 - L408(E) - FINISHES & FIXTURES PLAN

PRE-1936 CULVERT BELOW

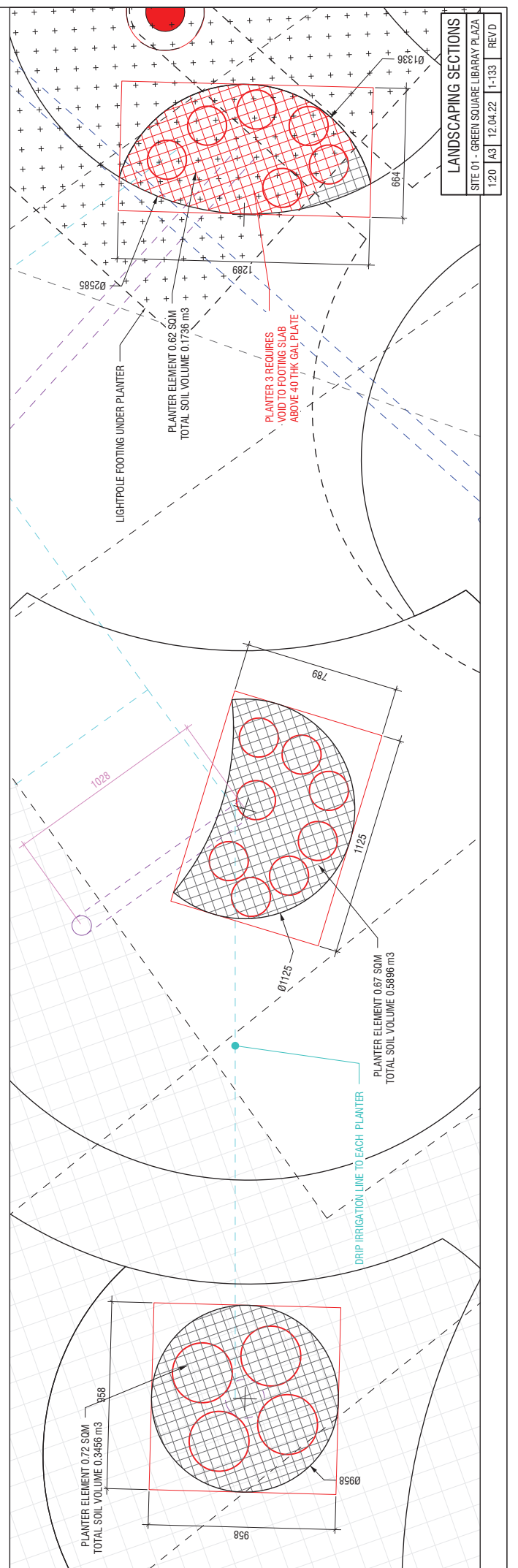
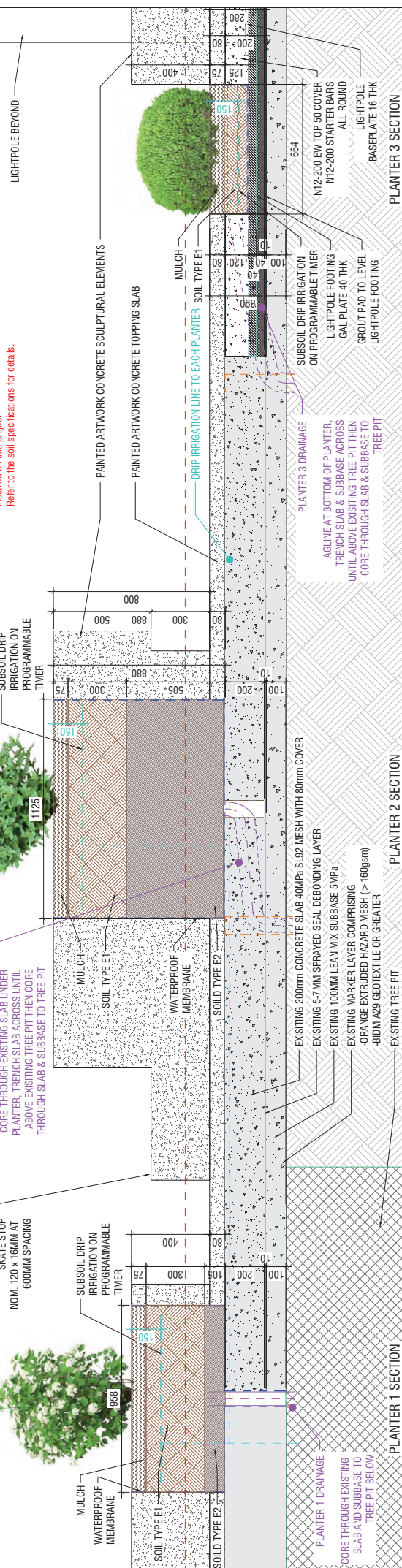
1936 CULVERT BELOW



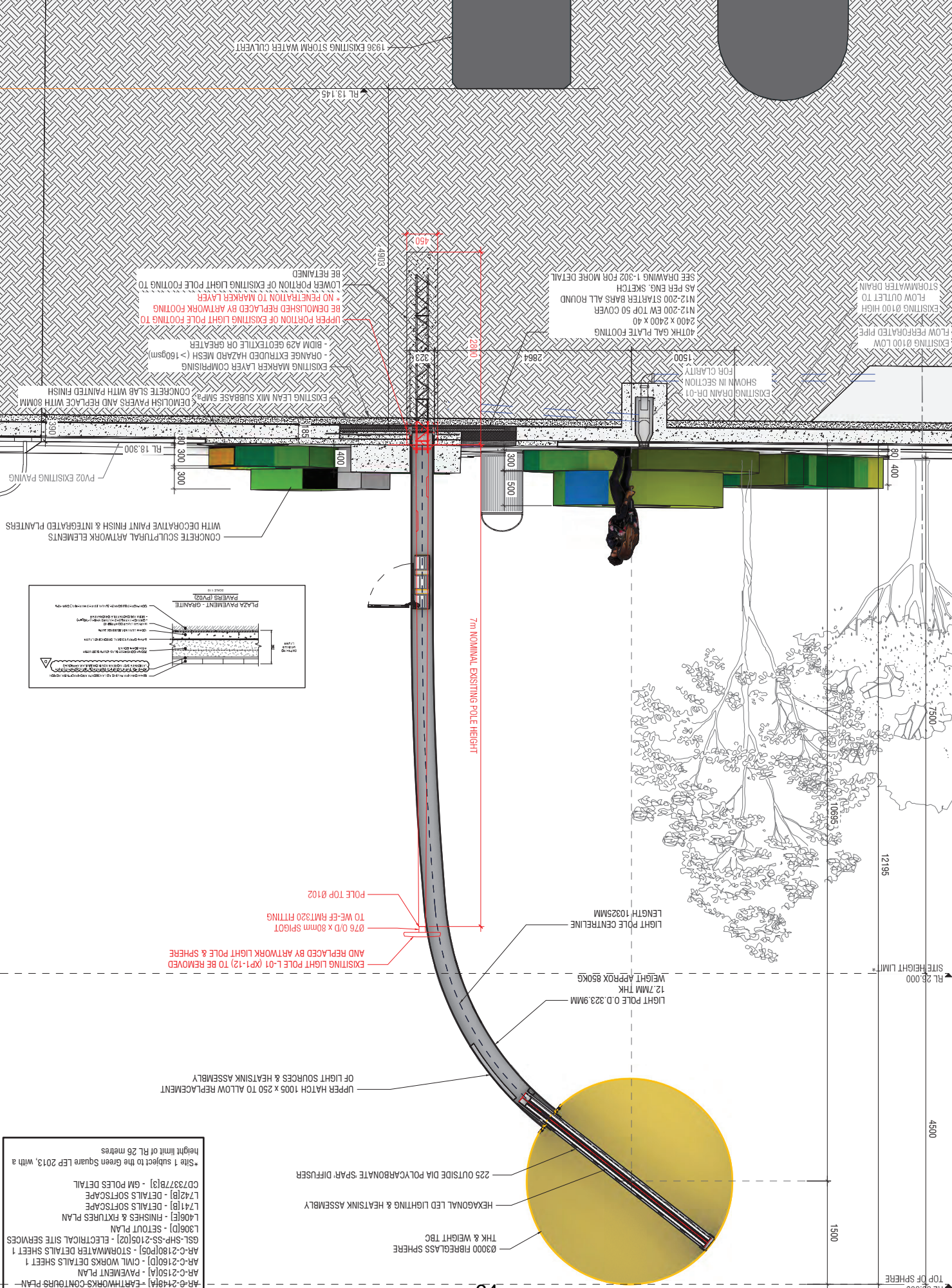
DETAIL SERVICES OVERLAY
SITE 01 - GREEN SQUARE LIBRARY PLAZA
1:50 A3 | 12.04.22 | 1-122 | REVH

- LIST OF SOURCE DRAWINGS**
- AR-C-2146(A) - EXISTING UTILITIES PLAN
 - AR-C-2148(A) - EARTHWORKS CONTOURS PLAN
 - AR-C-2150(A) - PAVEMENT PLAN
 - GSL-SHP-SS-2105(02) - ELECTRICAL SITE SERVICES
 - L306(D) - SETOUT PLAN
 - L408(E) - FINISHES & FIXTURES PLAN

Soil type reference codes correlate with soil specifications in Leake S & Haeger E. 2018, Soils for Landscape Development. CSIRO Publishing.
 from soil supplier that meets the specified soil type for all soil installed on this project.
 Refer to the soil specifications for details.

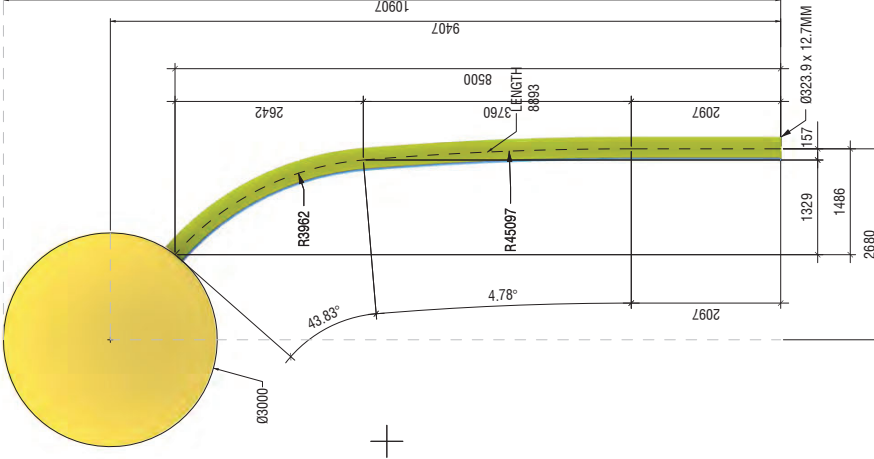


1:50	A3	03.05.22	1-301	REV G
SITE 01 - GREEN SQUARE LIBRARY PLAZA				
VERTICAL SECTION				



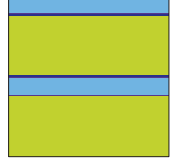
- LIST OF SOURCE DRAWINGS
- AR-C-2146(A) - EXISTING UTILITIES PLAN
 - AR-C-2150(A) - PAVEMENT PLAN
 - AR-C-2146(B) - PARTNERSHIPS CONTRIBS PLAN
 - AR-C-2150(B) - CIVIL WORKS DETAILS SHEET 1
 - AR-C-2180(P05) - STORMWATER DETAILS SHEET 1
 - GSL-SHP-SS-2105(02) - ELECTRICAL SITE SERVICES
 - L306(D) - SETOUT PLAN
 - L406(E) - FINISHES & FIXTURES PLAN
 - L741(B) - DETAILS SOFTSCAPE
 - L742(B) - DETAILS SOFTSCAPE
 - CD73377(B) - GM POLES DETAIL
- *Site 1 subject to the Green Square LEP 2013, with a height limit of RL 26 metres

COL-ID	LAYER NAME	AREA (m2)	COLOUR RGB CODE	NO OF REGIONS	TYPE	PANTONE
SM-01	SPHERE-SUN	28.27	245,218,13	1	SPHERE	0091*
SM-02	SPHERE-SUN	28.27	245,218,13	1	SPHERE	0091*
SM-03	SPHERE-SUN	28.27	245,218,13	1	SPHERE	0091*

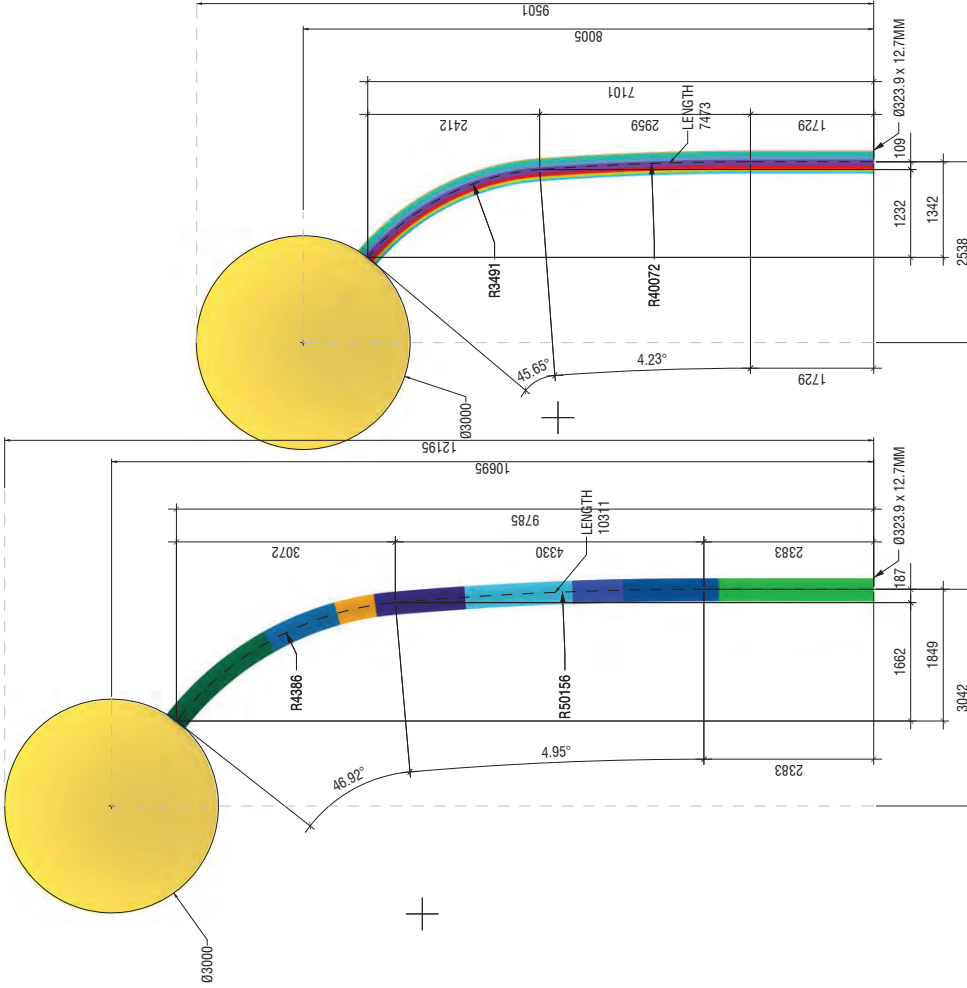


4. Zeiland Open Space
Heard and McDonald Island

COL-ID	LAYER NAME	AREA (m2)	COLOUR RGB CODE	NO OF REGIONS	TYPE	PANTONE
P4-01	01	6.70	195,209,38	2	POLE	583
P4-02	02	0.19	10,10,154	2	POLE	2728
P4-03	03	1.79	97,185,255	2	POLE	306
P4-04	04	0.40	85,56,139	4	POLE	2985

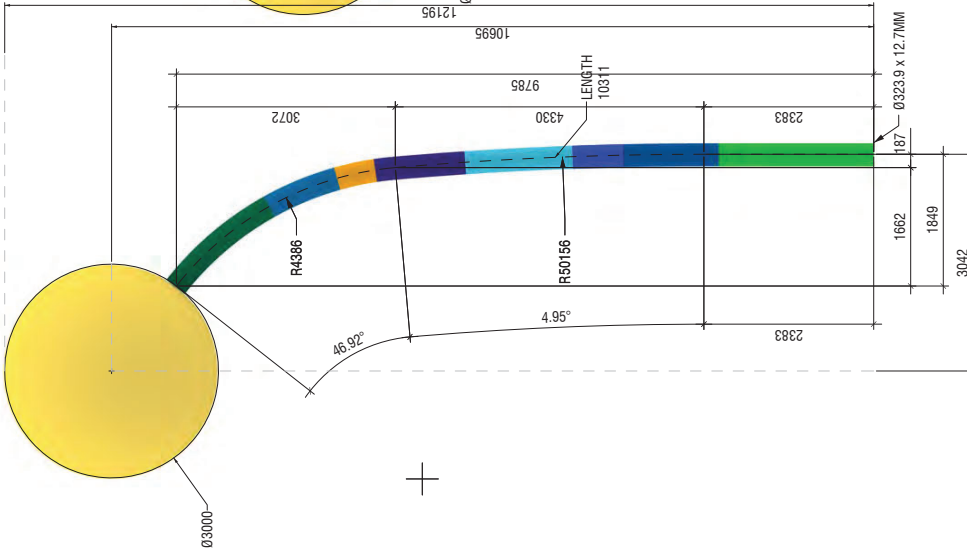
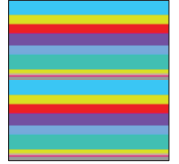


POLE & SPHERE FINISH		
PROJECT WIDE		
1:75	A3	22.03.22 0-801A
		REV L



2. School at Corner Joynton Ave and Zeiland Ave
Yaviza, Tapon dei Danien, Panama

COL-ID	LAYER NAME	AREA (m2)	COLOUR RGB CODE	NO OF REGIONS	TYPE	PANTONE
P2-01	20181103_Beam_Shape_01-01-12	0.11	258,30,113	2	POLE	3006
P2-02	20181103_Beam_Shape_01-01-13	0.19	199,179,154	2	POLE	5025
P2-03	20181103_Beam_Shape_01-01-14	1.23	217,22,433	4	POLE	397
P2-04	20181103_Beam_Shape_01-01-15	0.67	115,12,227	2	POLE	2626
P2-05	20181103_Beam_Shape_01-01-16	1.12	144,8,255	2	POLE	286
P2-06	20181103_Beam_Shape_01-01-17	0.36	248,39,31	1	POLE	46
P2-07	20181103_Beam_Shape_01-01-18	7.82	312,62,255	2	POLE	2958



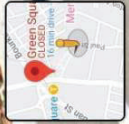
1. Library Plaza
Grasmere, Lake District, England

COL-ID	LAYER NAME	AREA (m2)	COLOUR RGB CODE	NO OF REGIONS	TYPE	PANTONE
P1-01	POLE_01_Cover_V1-1	1.38	13,14,141	1	POLE	59-65
P1-02	POLE_01_Cover_V1-2	0.22	8,49,255	1	POLE	293
P1-03	POLE_01_Cover_V1-3	1.54	77,202,233	1	POLE	312
P1-04	POLE_01_Cover_V1-4	1.29	61,40,171	1	POLE	2788
P1-05	POLE_01_Cover_V1-5	0.65	61,141,172	1	POLE	314
P1-06	POLE_01_Cover_V1-6	1.77	0,112,74	1	POLE	828
P1-07	POLE_01_Cover_V1-7	10.49				





Paul St
 Zealand, New South Wales
 Google
 Street View



Google

Photo provided by Paul St © 2023 Google. All rights reserved. Terms

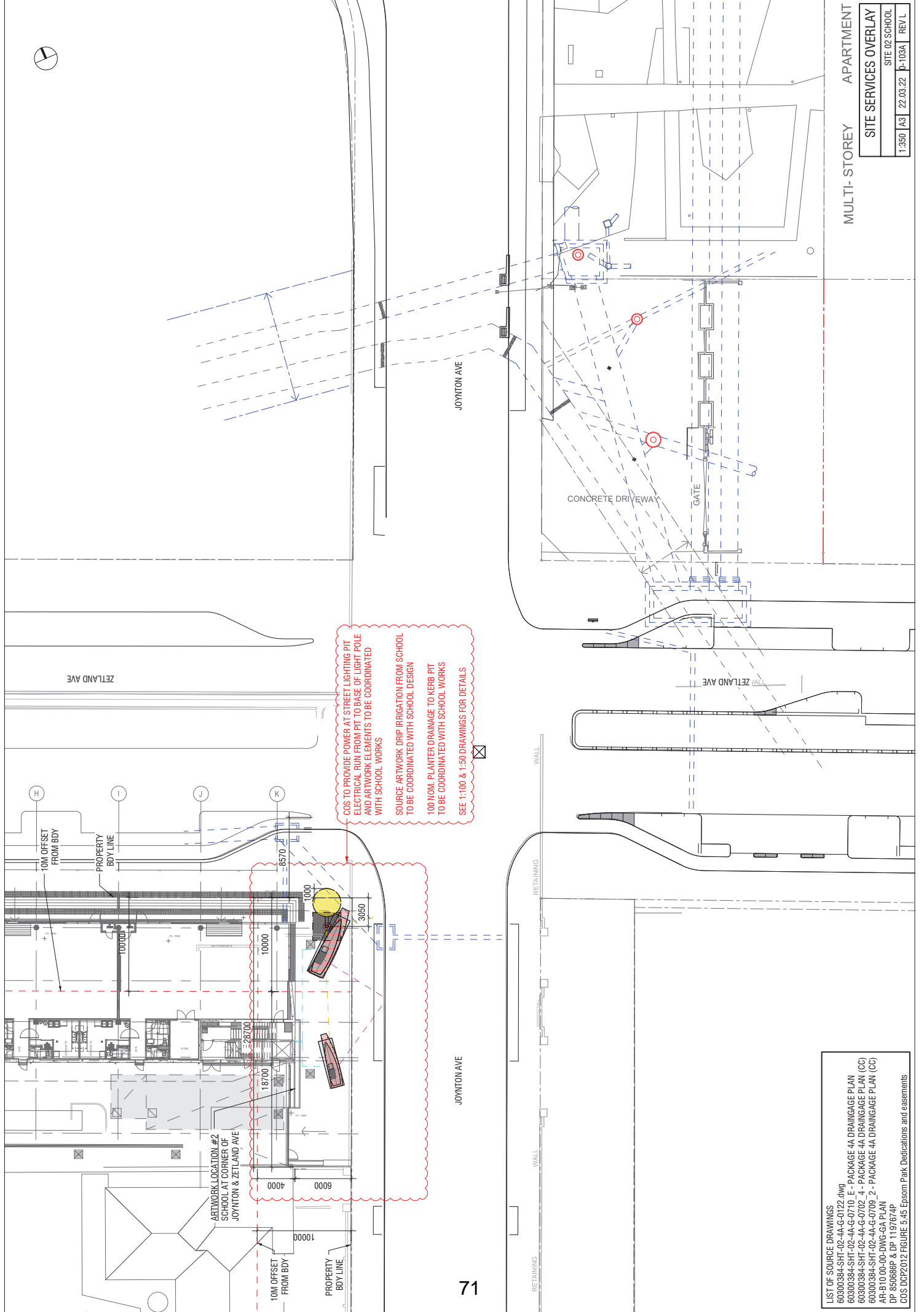
REFERENCE PHOTO SITE 1A			
SITE 01 - GREEN SQUARE LIBRARY PLAZA			
NTS	A3	27.08.21	1-901 REV D

WEblink
<https://goo.gl/maps/8BkAqLmFFeYCE939>



REFERENCE PHOTO SITE 1B			
SITE 01 - GREEN SQUARE LIBRARY PLAZA			
NTS	A3	27.08.21	1-902 REV D

WEB LINK
<https://goo.gl/maps/8BkAqLmFFeYCE939>



COS TO PROVIDE POWER AT STREET LIGHTING PIT
 ELECTRICAL RUN FROM PIT TO BASE OF LIGHT POLE
 AND ARTWORK ELEMENTS TO BE COORDINATED
 WITH SCHOOL WORKS

 SOURCE ARTWORK DRIP IRRIGATION FROM SCHOOL
 TO BE COORDINATED WITH SCHOOL DESIGN

 100 NOM. PLANTER DRAINAGE TO KERB PIT
 TO BE COORDINATED WITH SCHOOL WORKS

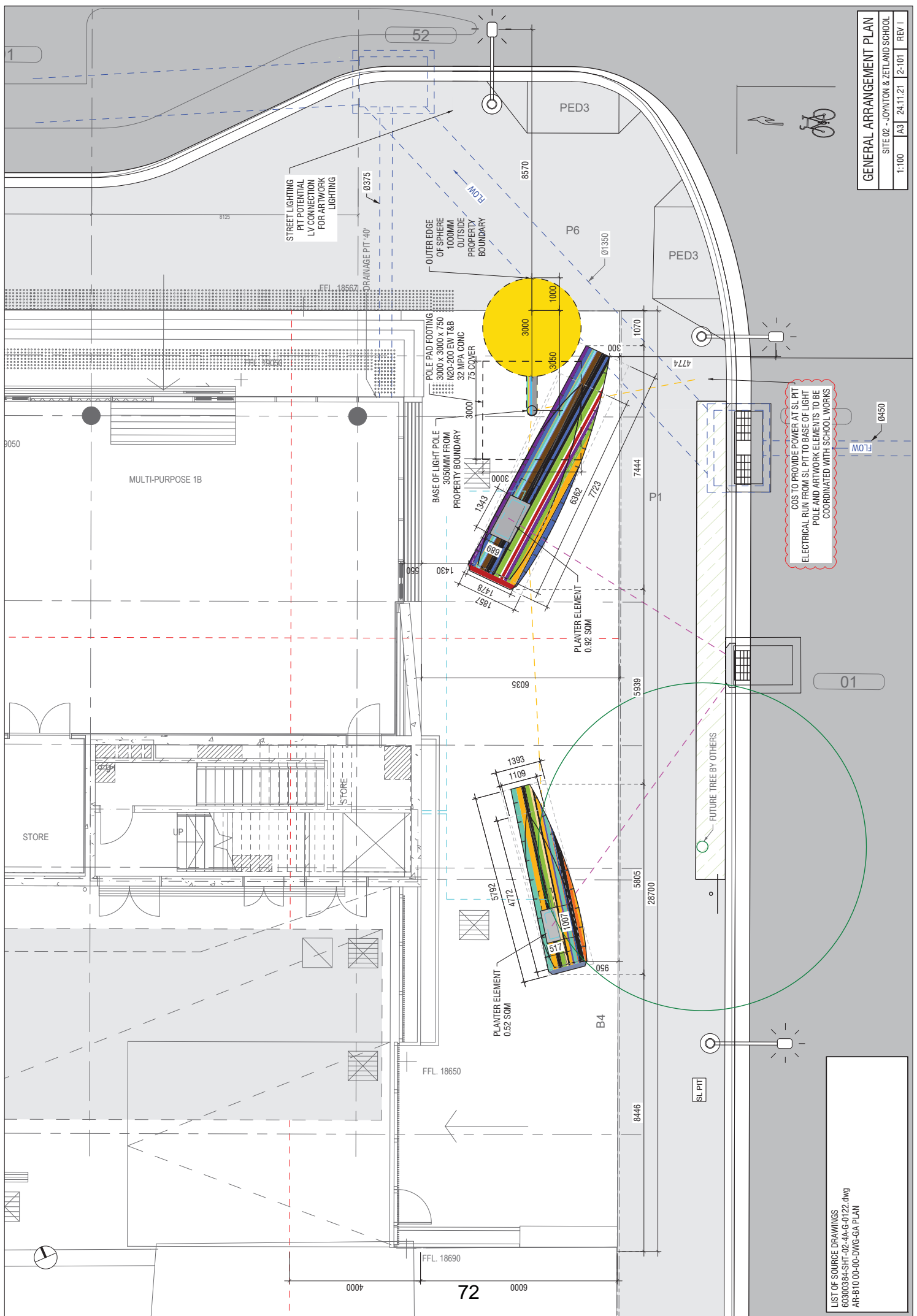
 SEE 1:100 & 1:50 DRAWINGS FOR DETAILS

- LIST OF SOURCE DRAWINGS
- 60300384-SHT-02-4A-G-0122.dwg
 - 60300384-SHT-02-4A-G-0710_E - PACKAGE 4A DRAINAGE PLAN
 - 60300384-SHT-02-4A-G-0702_4 - PACKAGE 4A DRAINAGE PLAN (CC)
 - 60300384-SHT-02-4A-G-0709_2 - PACKAGE 4A DRAINAGE PLAN (CC)
 - AR-R10 00-00-DWG-GA PLAN
 - DP 850686P & DP 1197674P
 - COS DCP2012 FIGURE 5.45 Epsom Park Dedications and easements

MULTI-STOREY APARTMENT

SITE SERVICES OVERLAY

1:350	A3	22.03.22	D-103A	REV L
-------	----	----------	--------	-------

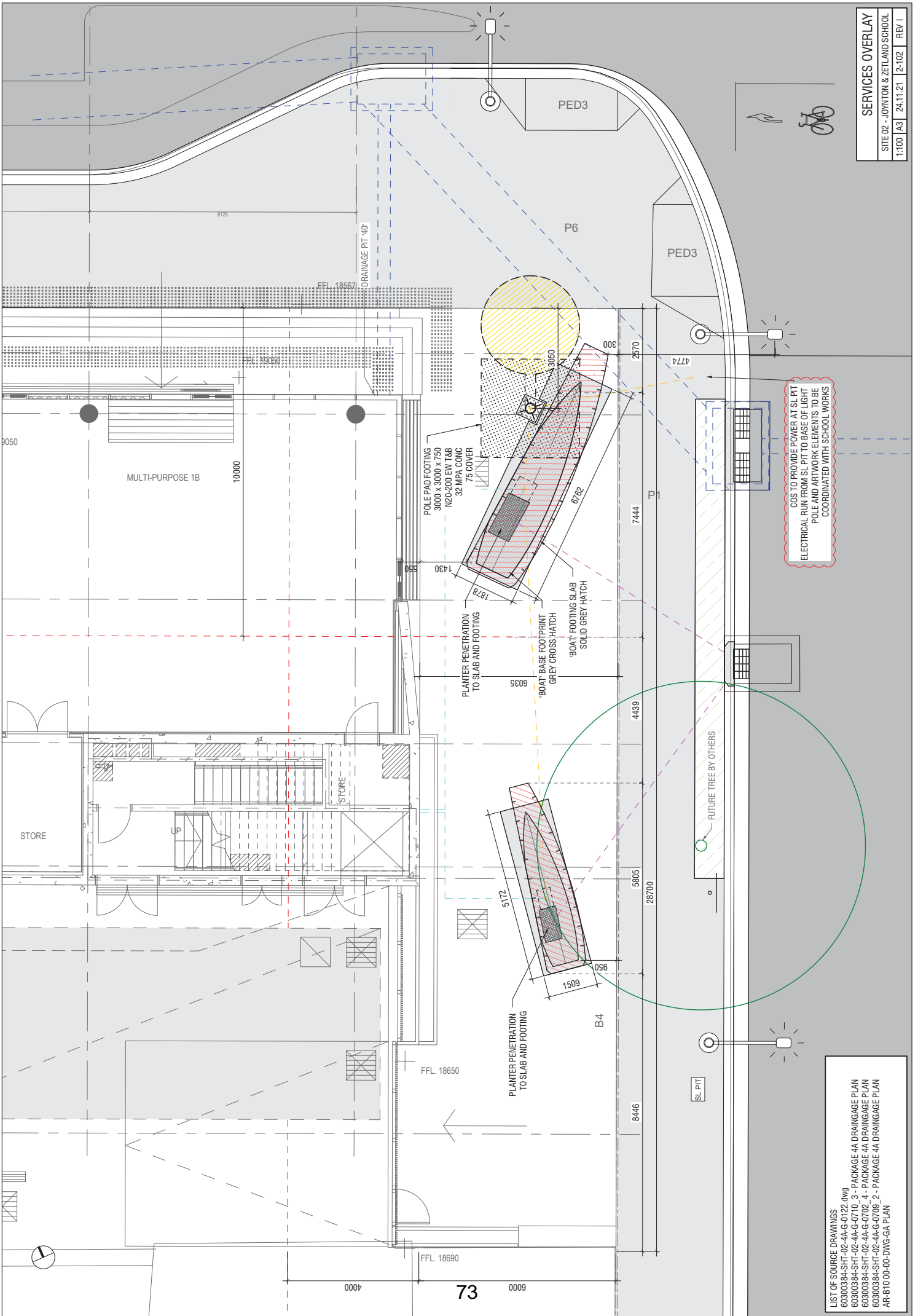


COS TO PROVIDE POWER AT SL PIT
 ELECTRICAL RUN FROM SL PIT TO BASE OF LIGHT
 POLE AND ARTWORK ELEMENTS TO BE
 COORDINATED WITH SCHOOL WORKS

LIST OF SOURCE DRAWINGS
 60300384-SHT-02-4A-G-0122.dwg
 AR-B10-00-00-DWG-GA PLAN

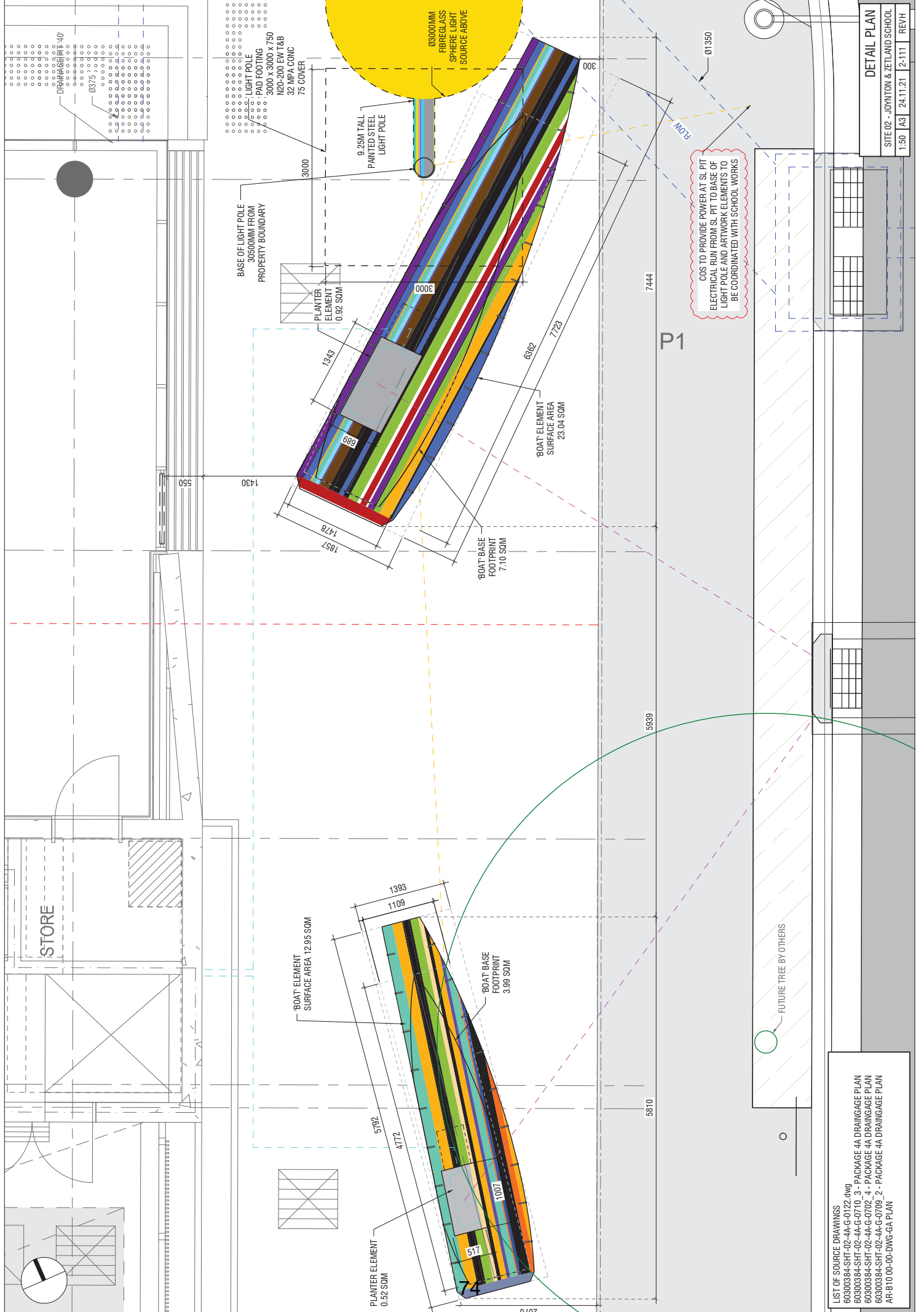
01

72



COS TO PROVIDE POWER AT SL PIT
 ELECTRICAL RUN FROM SL PIT TO BASE OF LIGHT
 POLE AND ARTWORK ELEMENTS TO BE
 COORDINATED WITH SCHOOL WORKS

- LIST OF SOURCE DRAWINGS
 60300384-SHT-02-4A-G-0122.dwg
 60300384-SHT-02-4A-G-0710_3 - PACKAGE 4A DRAINAGE PLAN
 60300384-SHT-02-4A-G-0702_4 - PACKAGE 4A DRAINAGE PLAN
 60300384-SHT-02-4A-G-0709_2 - PACKAGE 4A DRAINAGE PLAN
 AR-B10-00-00-DWG-GA PLAN



DETAIL PLAN
 SITE 02 - JOYNTON & ZETLAND SCHOOL
 1:50 | A3 | 24.11.21 | 2-111 | REVH

- LIST OF SOURCE DRAWINGS
 60300384-SHT-02-4A-G-0122.dwg
 60300384-SHT-02-4A-G-0710_3 - PACKAGE 4A DRAINAGE PLAN
 60300384-SHT-02-4A-G-0710_4 - PACKAGE 4A DRAINAGE PLAN
 60300384-SHT-02-4A-G-0709_2 - PACKAGE 4A DRAINAGE PLAN
 AR-B10-00-00.DWG-GA PLAN

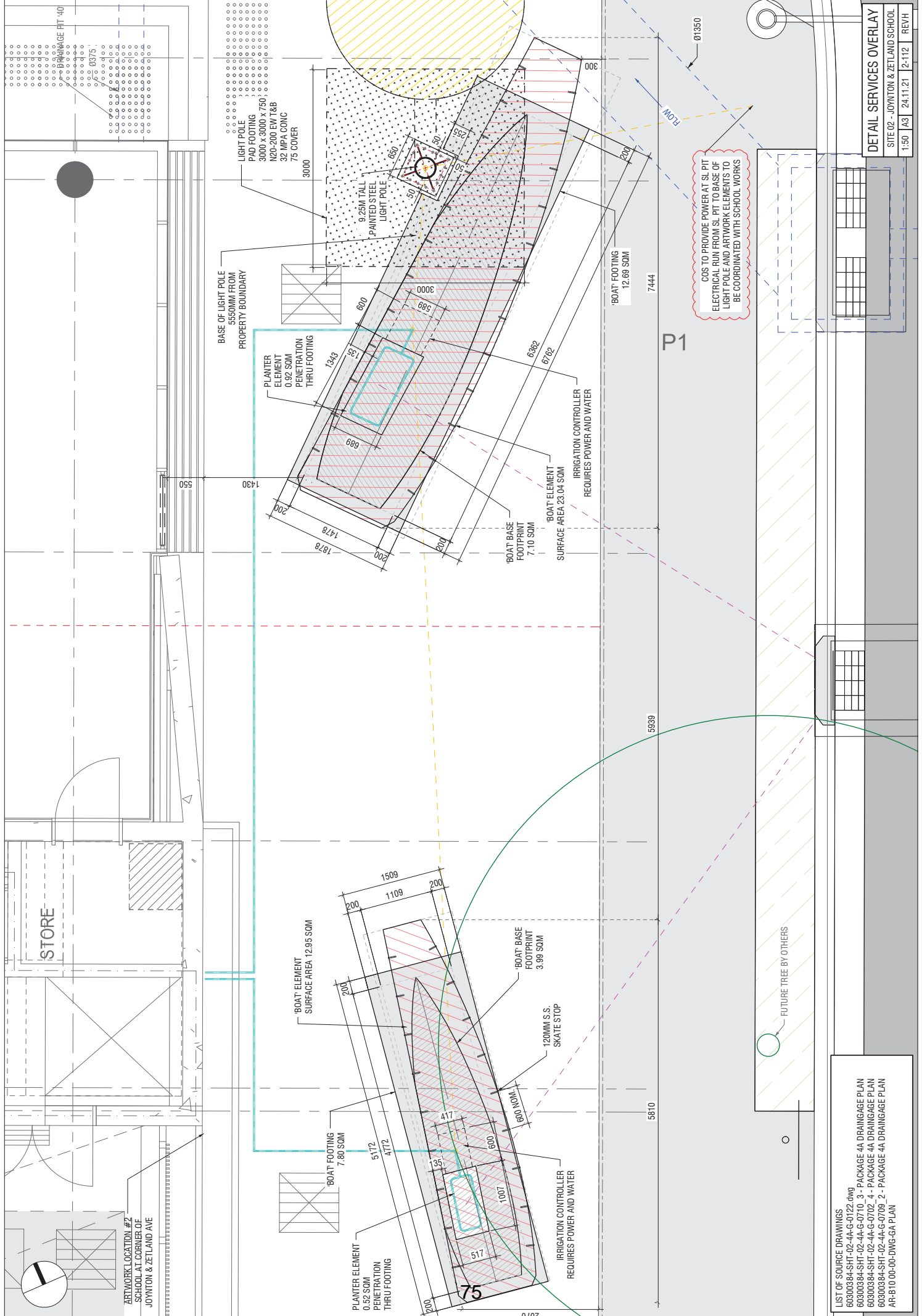
COS TO PROVIDE POWER AT SL PIT
 ELECTRICAL RUN FROM SL PIT TO BASE OF
 LIGHT POLE AND ARTWORK ELEMENTS TO
 BE COORDINATED WITH SCHOOL WORKS

STORE

FUTURE TREE BY OTHERS

P1

2070

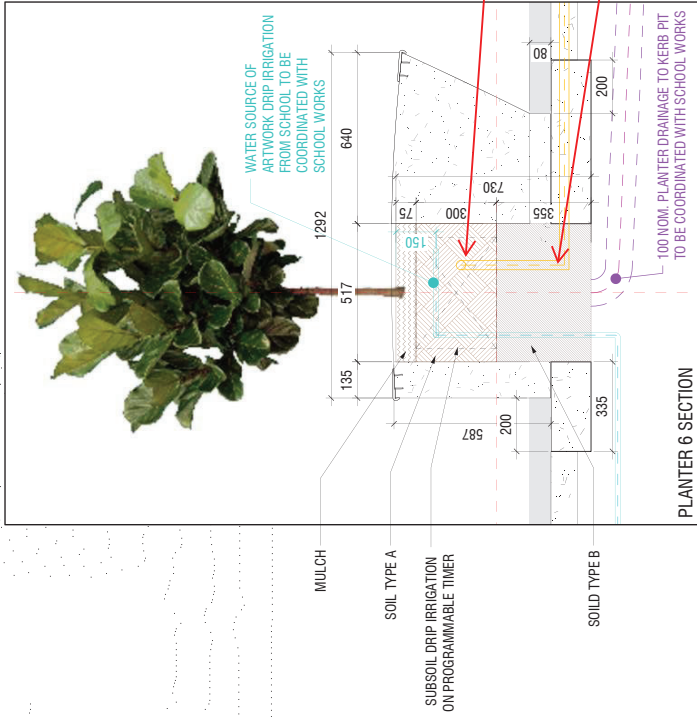


COs TO PROVIDE POWER AT SL PIT ELECTRICAL RUN FROM SL PIT TO BASE OF LIGHT POLE AND ARTWORK ELEMENTS TO BE COORDINATED WITH SCHOOL WORKS

- LIST OF SOURCE DRAWINGS
- 60300384-SHT-02-4A-G-0122.dwg
 - 60300384-SHT-02-4A-G-0710_3 - PACKAGE 4A DRAINAGE PLAN
 - 60300384-SHT-02-4A-G-0702_4 - PACKAGE 4A DRAINAGE PLAN
 - 60300384-SHT-02-4A-G-0709_2 - PACKAGE 4A DRAINAGE PLAN
 - AR-B10-00-00-DWG-GA PLAN

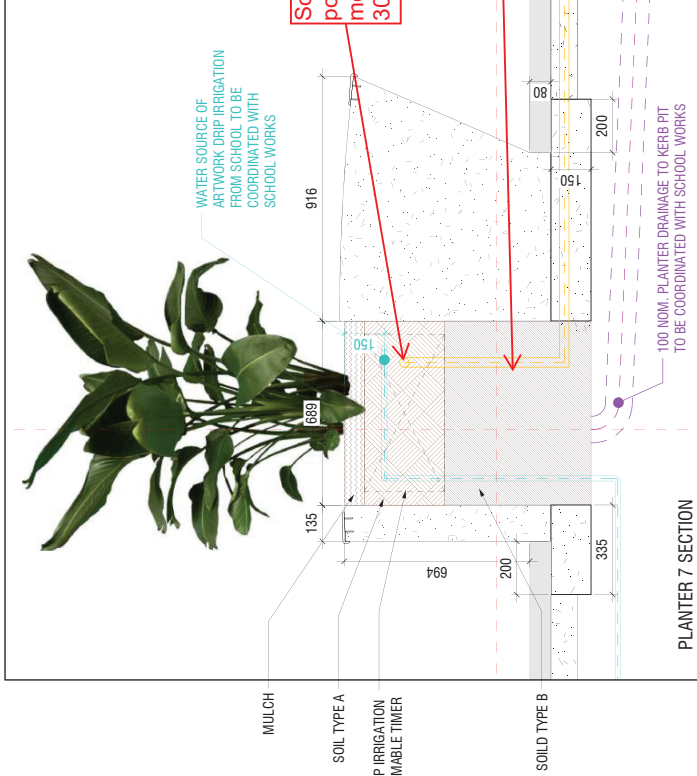
ARTWORK LOCATION #2
SCHOOL AT CORNER OF
JOYNTON & ZETLAND AVE

DETAIL SERVICES OVERLAY			
SITE 02 - JOYNTON & ZETLAND SCHOOL	1:50	A3	24.11.21
			2-112
			REVH



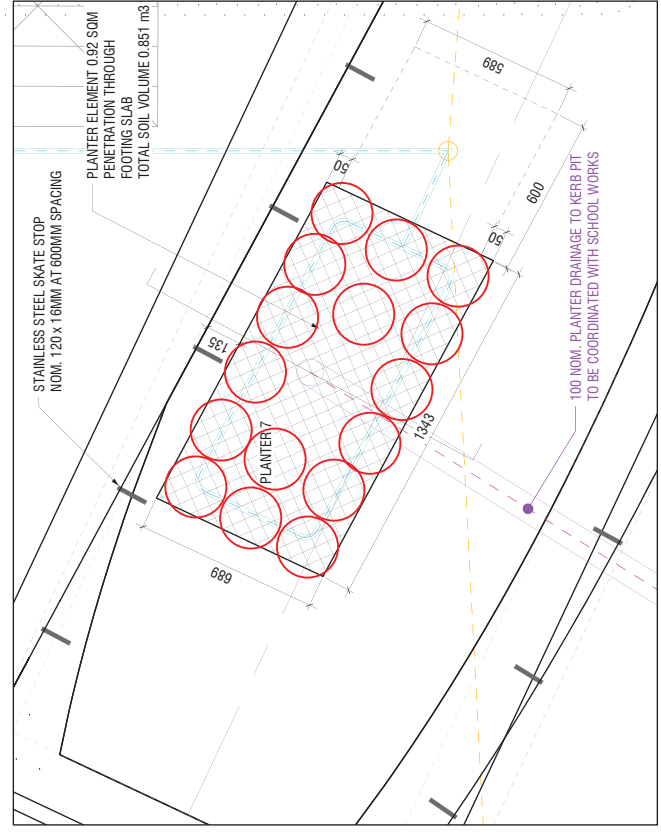
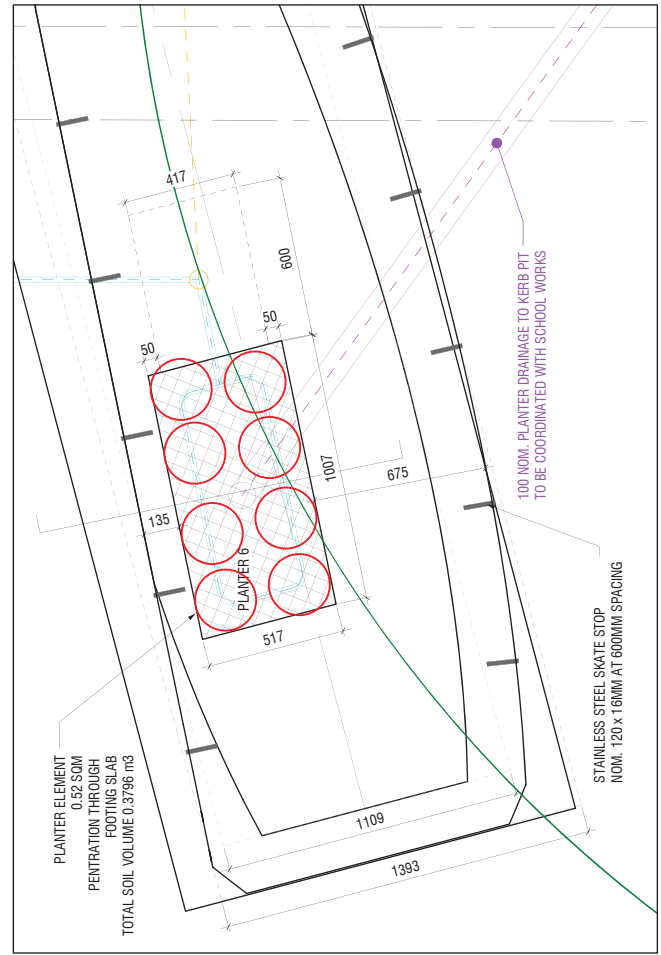
Soil type: E1 (on podium topsoil media in top 300mm)

Soil type E2 (on podium subsoil media).



Soil type: E1 (on podium topsoil media in top 300mm)

Soil type E2 (on podium subsoil media).

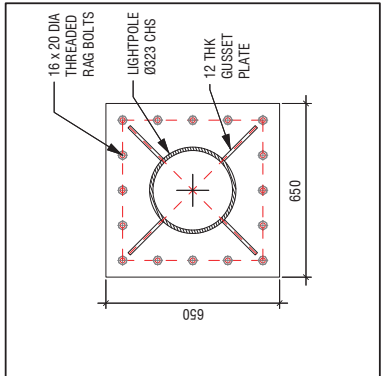
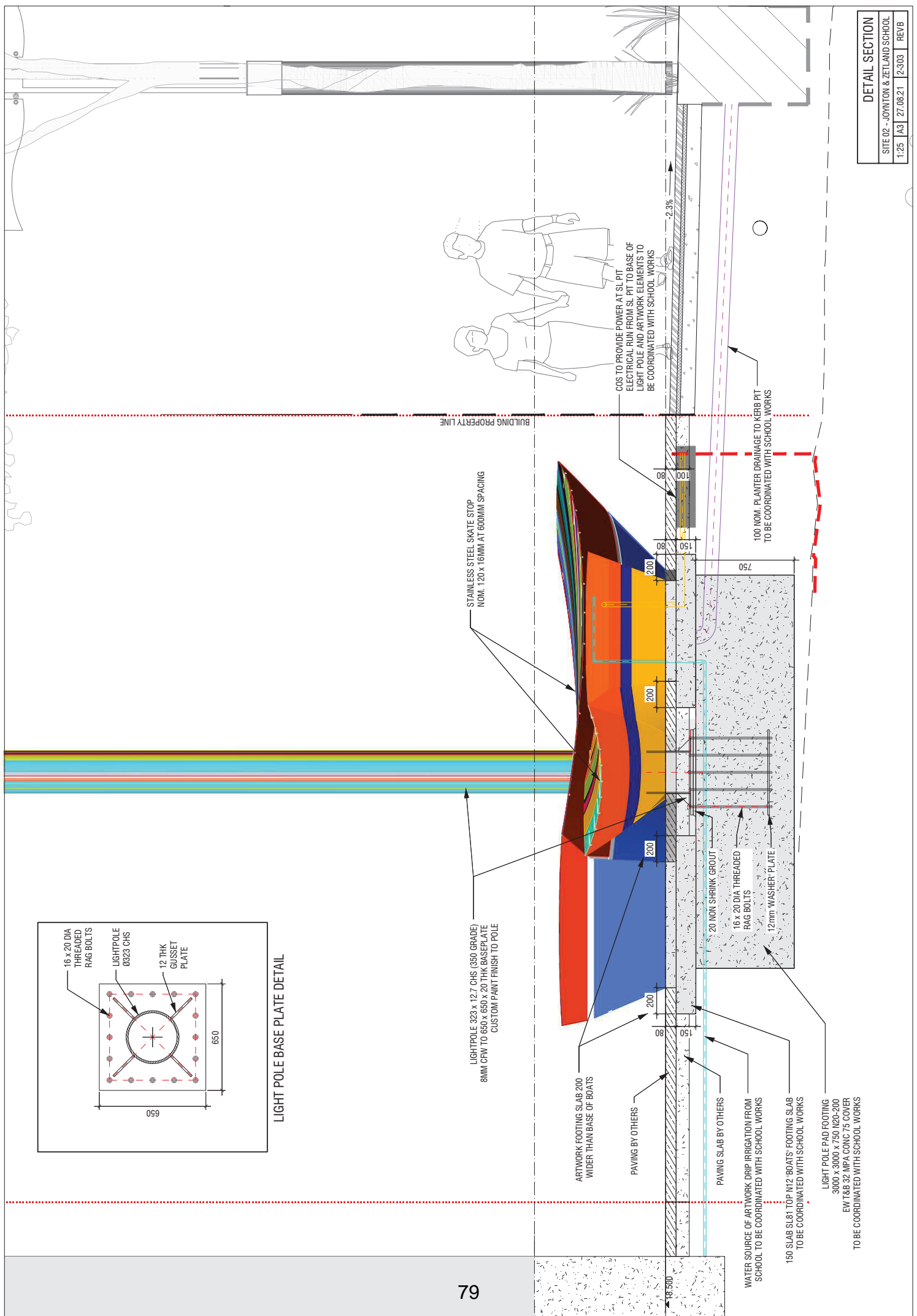


Philodendron Xanadu
good understory shrubs
for under planter 6 and
7. Recommend 8 x
Planter 6 and 16 x
Planter 7 (140-200mm
pot size)

Sansevieria trifasciata
alternative understory,
but 2nd choice after
philodendron

Strelitzia reginae less
suitable understory
plants

LANDSCAPING SECTIONS			
SITE 02 - JOWNTON & ZETLAND SCHOOL	1:20	A3	24.11.21
			2-133
			REV D



LIGHT POLE BASE PLATE DETAIL



**GREEN SQUARE
COMMUNITY
FACILITY**



132 Joynton Ave
 Zetland, New South Wales
 Google
 Street View



Copied to clipboard

Image captured Aug 2020 © 2020 Google Australia Terms Report a problem

REFERENCE PHOTO SITE 2			
SITE 02 - JOYNTON & ZETLAND SCHOOL			
NTS	A3	27.08.21	2-902
			REV D

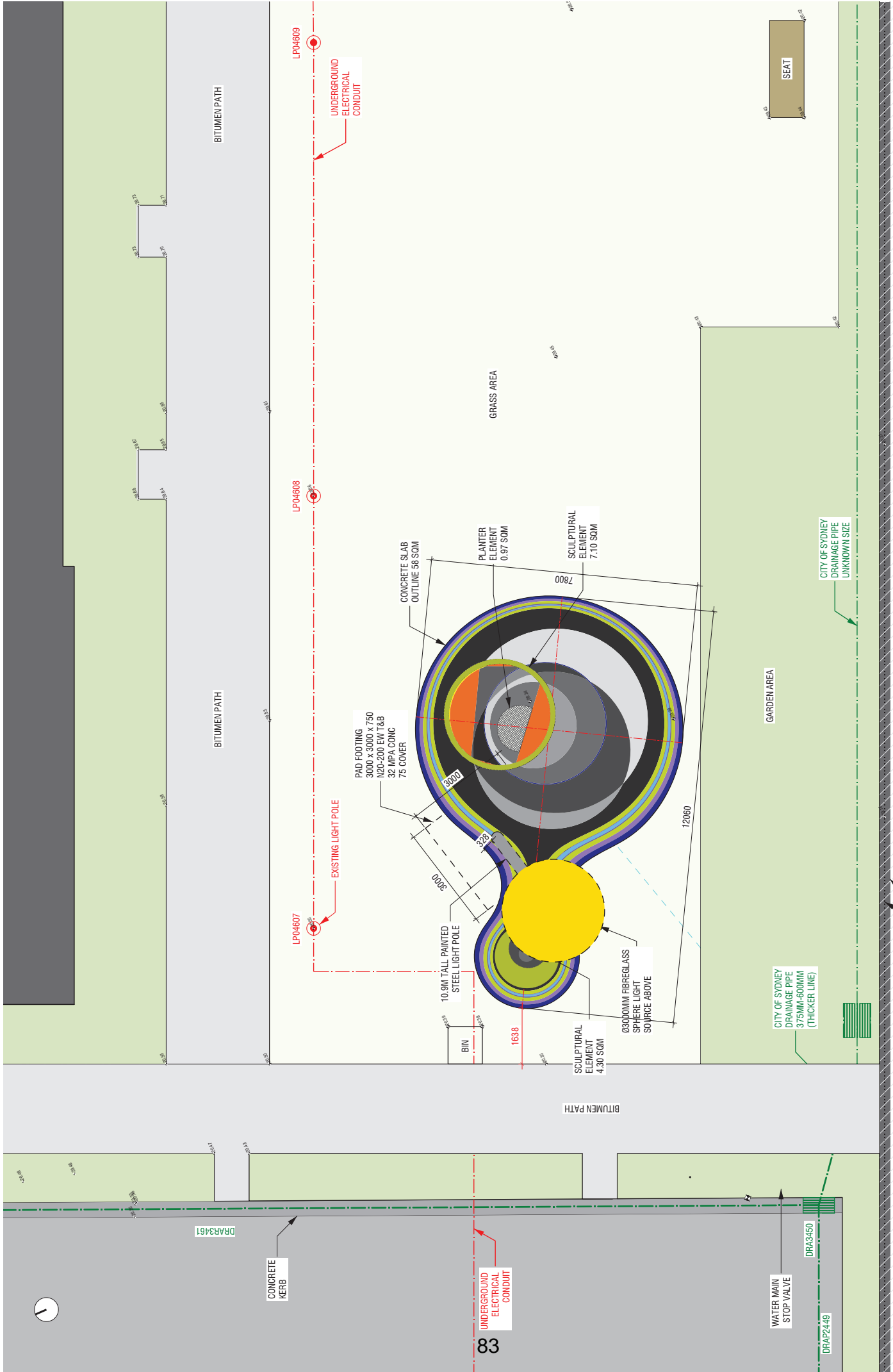
WEB LINK
<https://goo.gl/maps/TKd4Gz2E8T7nraNA>



Image captured Aug 2023 © 2023 Google Australia Terms Report a problem

REFERENCE PHOTO SITE 2			
SITE 02 - JOYNTON & ZETLAND SCHOOL			
NTS	A3	27.08.21	2-903
			REV D

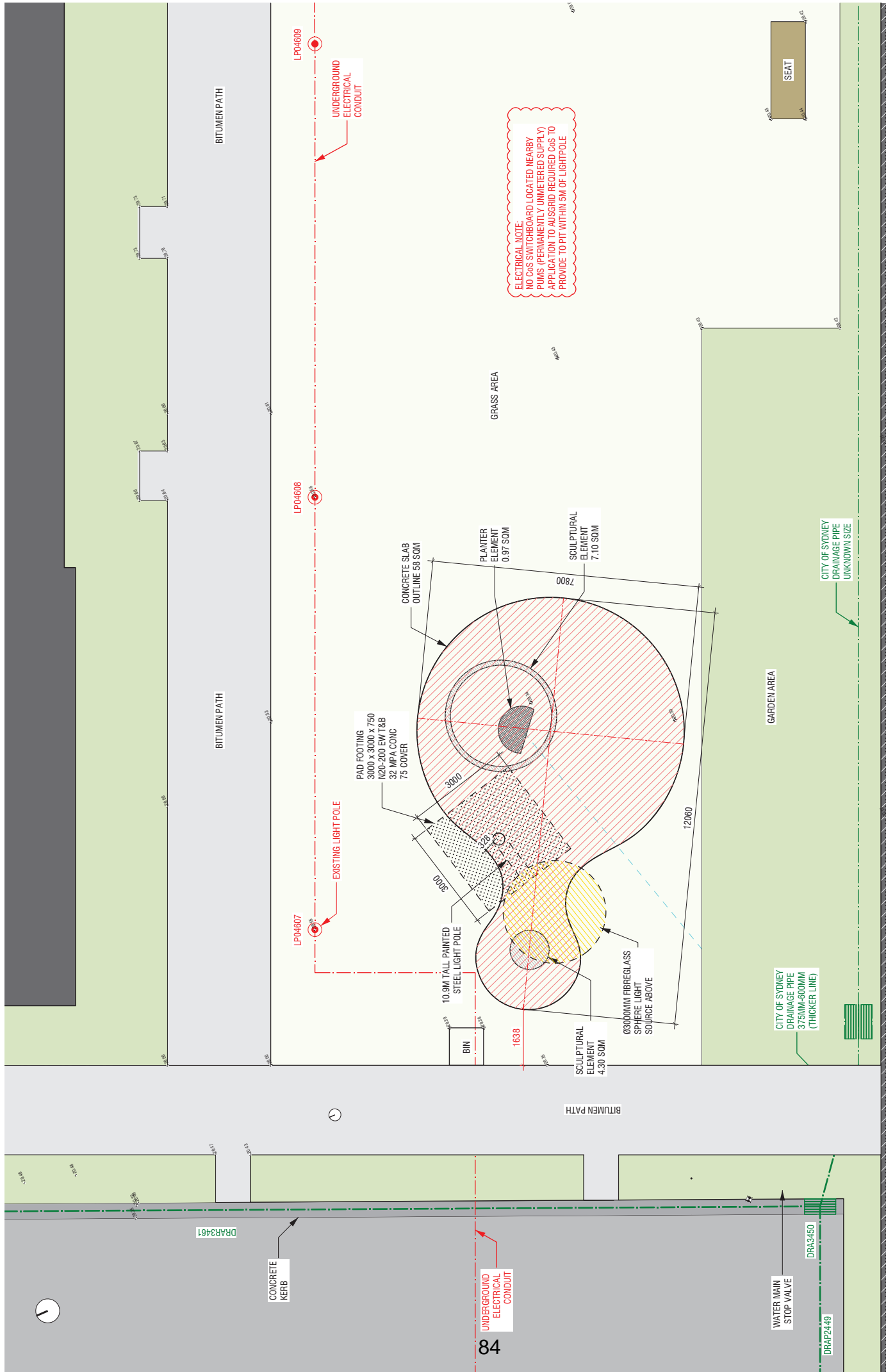
WEblink
<https://www.google.com/maps/@37.7411111,175.3111111,15z>



GENERAL ARRANGEMENT PLAN			
SITE 04 - ZETLAND OPEN SPACE			
1:100	A3	27.08.21	4-101
			REV F

EXISTING AUSGRID SITE

LIST OF SOURCE DRAWINGS
 60300384-SHT-02-4A-G-0122.dwg
 BL09062647_124742_VS04 Public Domain WAE(5).pdf
 zelland open space plan from geocortex marked up.pdf



ELECTRICAL NOTE:
 NO COS SWITCHBOARD LOCATED NEARBY
 PUMPS (PERMANENTLY UNMETERED SUPPLY)
 APPLICATION TO AUSGRID REQUIRED COS TO
 PROVIDE TOPIT WITHIN 5M OF LIGHTPOLE

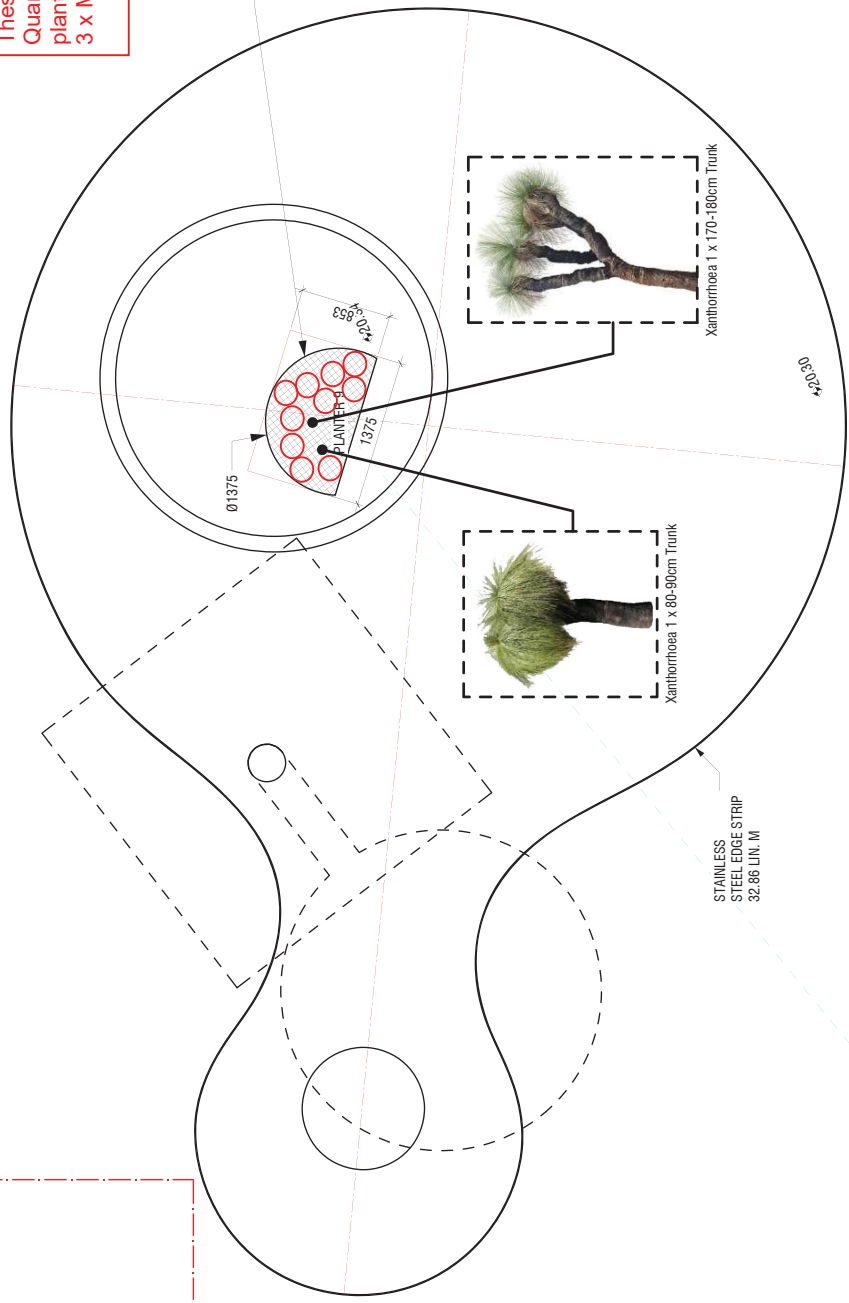
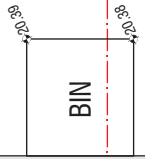
SERVICES OVERLAY			
SITE 04- ZETLAND OPEN SPACE			
1:100	A3	27.08.21	4-102
			REV F

EXISTING AUSGRID SITE

LIST OF SOURCE DRAWINGS
 60300384-SHT-02-4A-G-0122.dwg
 BL09062647_124742_VS04 Public Domain WAE(5).pdf
 zelland open space plan from geocortex marked up.pdf



BITUMEN PATH



Understorey plants in order of suitability (not listed if not considered suitable):
 Myoporum
 Westringia Mundi
 Anigozanthos
 Carpobrotus.
 not listed but alternative:
 Banksia prostrata 'Cherry Candles'
 These are spreading groundcovers:
 Quantity: 9 for Planter 9.
 planter 8: only really suitable to use 3 x Myoporum or carpobrotus.

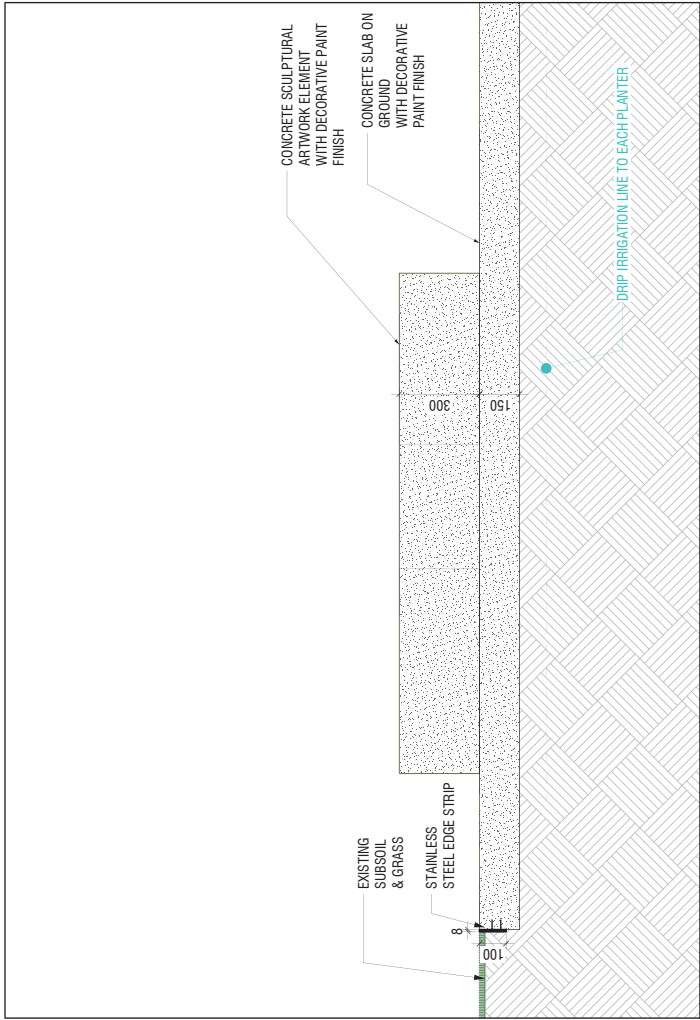
Alternative for both Xanthorrhoea are to use a smaller specimen. Say there is no or little trunk to the Xanthorrhoea specimen and the foliage is approx 300mm dia. then go for 4 x Xanthorrhoea.
 If not going for Xanthorrhoea at all: alternative species recommended (45-75L) - One per planter:
 Dwarf Eucalyptus pauciflora. E.g. Eucalyptus pauciflora Little Snowman' or Eucalyptus ficifolia 'Summer Glory' or 'Summer Beauty' or Eucalyptus caesia 'Silver Princess'

LANDSCAPING PLAN			
SITE 04- ZETLAND OPEN SPACE			
1:50	A3	27.08.21	4-132
			REV C

GARDEN AREA

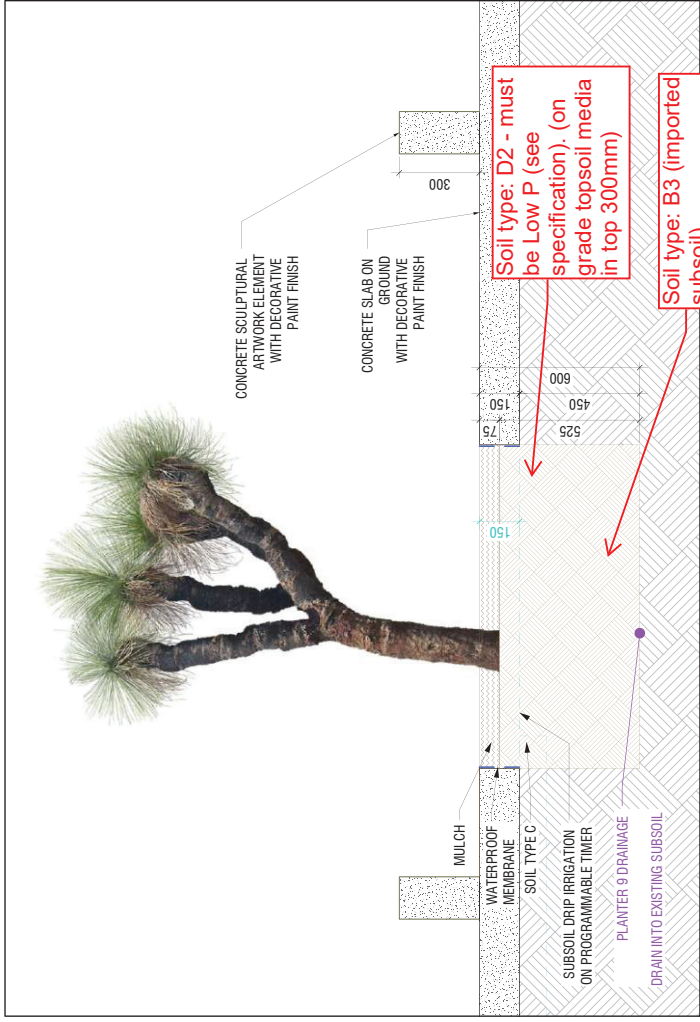
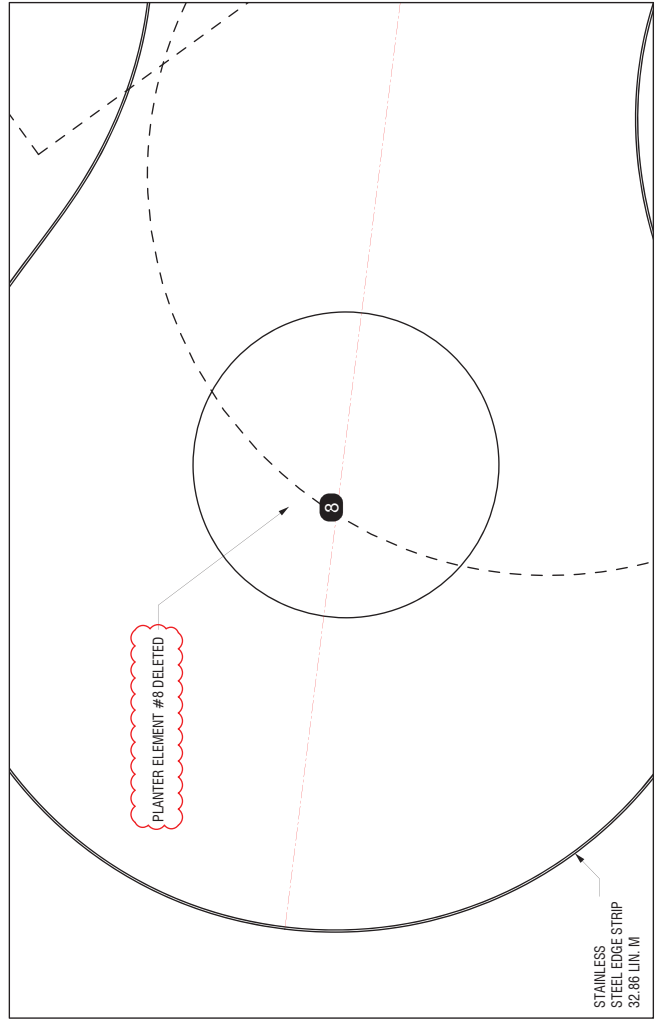
LIST OF SOURCE DRAWINGS
 60300384-SHT-02-4A-G-0122.dwg
 BL09062647_124742_VS04 Public Domain WAE(5).pdf
 zelland open space plan from geocortex marked up.pdf

OF SYDNEY

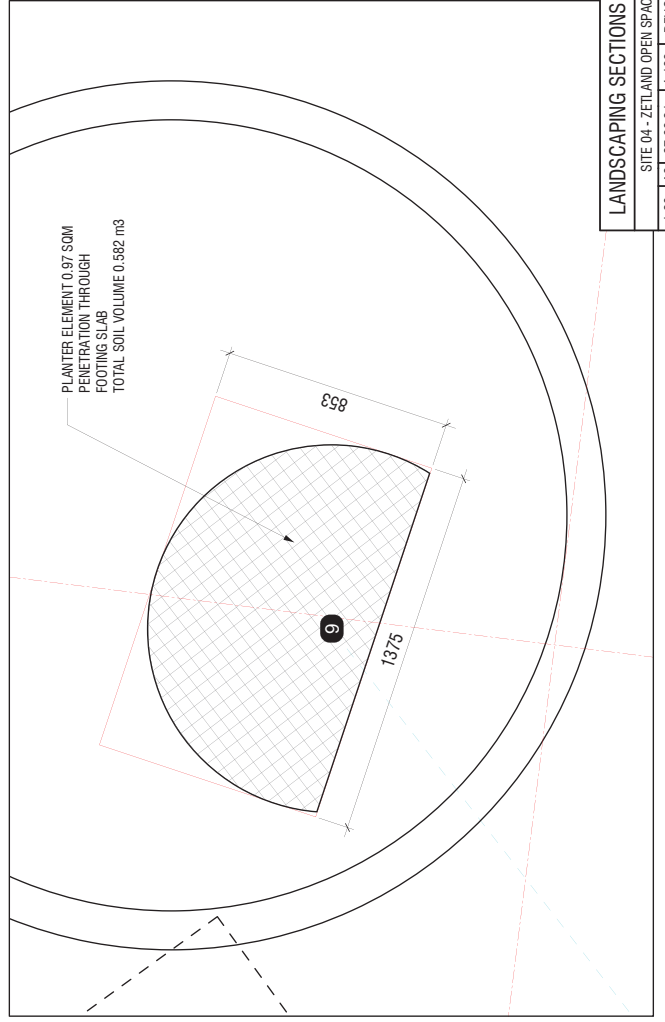


PLANTER 8 SECTION

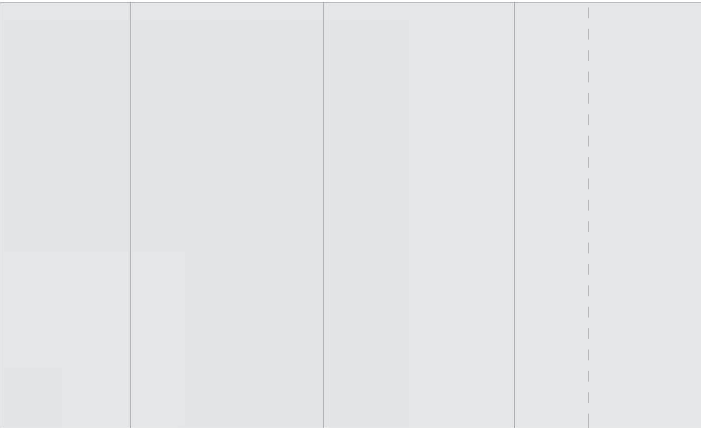
88



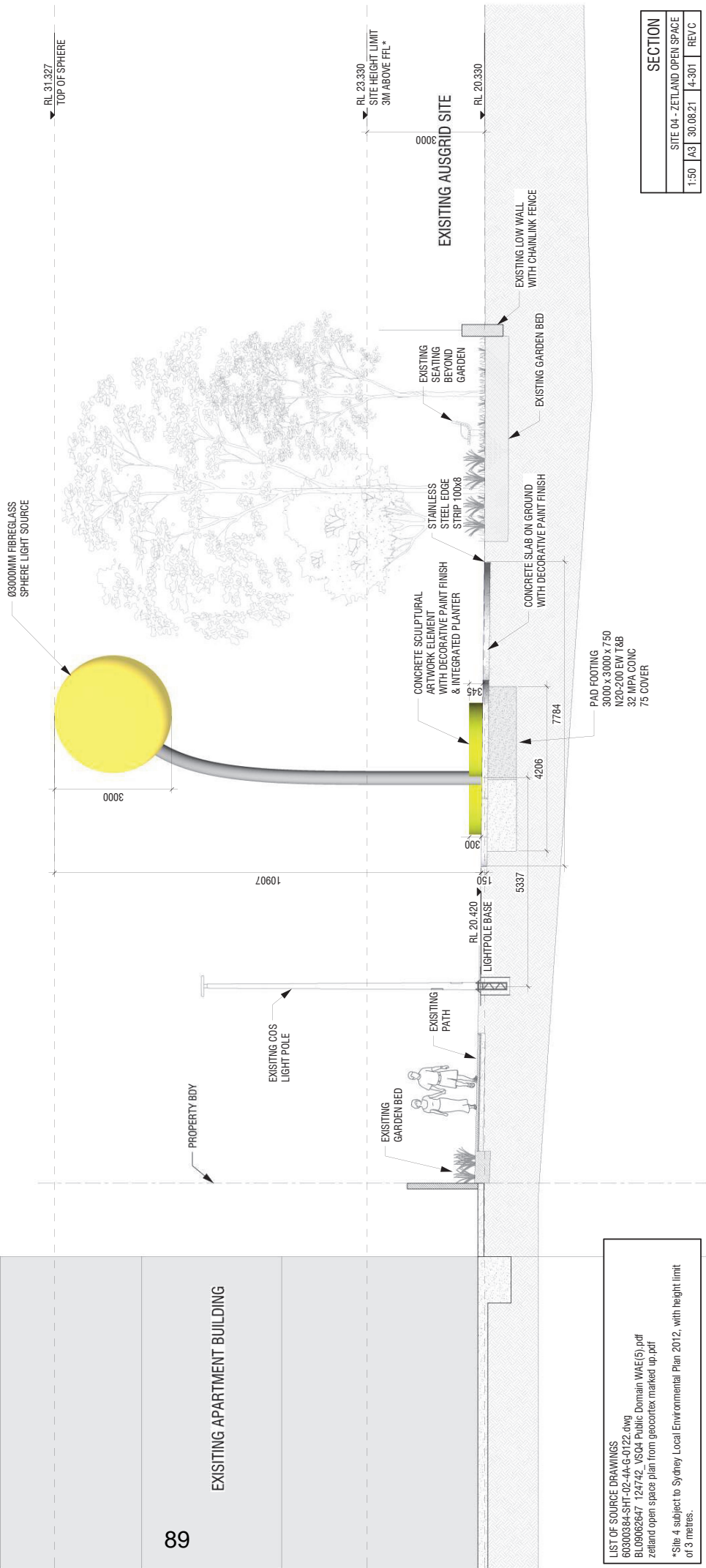
PLANTER 9 SECTION



LANDSCAPING SECTIONS			
SITE 04 - ZETLAND OPEN SPACE			
1:20	A3	27.08.21	4-133
			REVC



EXISTING APARTMENT BUILDING



SECTION			
1:50	A3	30.08.21	4-301
			REV C

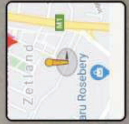
LIST OF SOURCE DRAWINGS
 60300384-SHT-02-4A-G-0122.dwg
 BL09062647_124742_VSO4 Public Domain WAE(5).pdf
 zelland open space plan from geocortex marked up.pdf

*Site 4 subject to Sydney Local Environmental Plan 2012, with height limit of 3 metres.





14 Delfino Ave
Zetland, New South Wales
Google
Street View



Google

Home Settings Full Screen © 2023 Google - Australia Terms Privacy & Ad Choices

91

REFERENCE PHOTO SITE 4			
SITE 04 - ZETLAND OPEN SPACE			
NTS	A3	27.08.21	4-902
			REV E

WEB LINK
<https://goo.gl/maps/8BkAqLmFEYC939>